

GAMO **PR-776 REVOLVER**
Adult Precision Airguns
8 SHOT .177 PELLET CO2 REVOLVER

.177 cal (4.5mm) Pellets • Quick Loading 8 Pellet Magazine (2 Included)
• 6" Barrel • Full Metal • 12g CO2 Power Source



OPERATIONAL MANUAL

READ THIS INSTRUCTION MANUAL COMPLETELY. This airgun is not a toy. Treat it with the same respect you would a firearm. Always carefully follow the safety directions found in this instruction manual and keep this manual in a safe place for future use.

WARNING NOT A TOY. ADULT SUPERVISION REQUIRED. MISUSE OR CARELESS USE MAY CAUSE SERIOUS INJURY OR DEATH. MAY BE DANGEROUS UP TO 224 YARDS (205 METERS).

This is a high powered airgun intended for use by those 16 years of age or older. Read all instructions before using. The purchaser and user should conform to all laws governing use and ownership of airguns.

WARNING LEAD AIRGUN AMMUNITION CONTAINS A CHEMICAL KNOWN TO THE STATE OF CALIFORNIA TO CAUSE CANCER AND BIRTH DEFECTS (OR OTHER REPRODUCTIVE HARM). DO NOT INHALE DUST OR PUT PELLETS IN MOUTH. WASH HANDS AFTER HANDLING.

SAFETY RULES

- Do not install a magazine which contains ammunition into the gun until you are ready to shoot. If you do install a magazine which contains ammunition into the gun and then decide not to shoot, either manually remove the magazine from the gun or shoot the remaining ammunition at a safe target.
- An unloaded, non-pressurized gun with an "ACTIVATED" safety is safest.
- Accidents happen fast, and accidentally injuring or killing someone is a terrible thing. Please shoot safety.
- Whenever you handle a GAMO pistol, make sure the safety is "ACTIVATED" and there is no ammunition in the magazine.
- Always use eye protection.

- Always use hearing protection.
- Think first, shoot second.
- Always point the gun in a safe direction. Never point your air pistol at people or animals even if it is not loaded.
- Always keep your fingers away from the trigger until you are ready to shoot.
- Always be certain of what is behind your target. Make sure your target does not conceal a person or some object which could be harmed by the pellets.
- Do not shoot at targets which allow ricochets or deflections.
- Do not shoot into or at water.
- Never use drugs or alcohol while handling this product.
- The air pistol and pellets should be kept in separate and secured places.
- Do not walk, run, jump or climb when carrying a loaded air pistol. A loaded air pistol should never be carried inside a vehicle.
- Never modify or alter your GAMO air pistol. Modification of the pistol may cause it to malfunction and tampering with the gun may make it unsafe.

WARNING DO NOT BRANDISH OR DISPLAY THIS AIRGUN IN PUBLIC. IT MAY CONFUSE PEOPLE AND MAY BE A CRIME. POLICE AND OTHERS MAY THINK THIS AIRGUN IS A FIREARM. DO NOT CHANGE THE COLOR AND MARKINGS TO MAKE IT LOOK MORE LIKE A FIREARM. THAT IS DANGEROUS AND MAY BE A CRIME.

WARNING If you are not going to use the pistol for a long period of time, we recommend removing the CO2 bottle.

When replacing the CO2 bottle, it is possible that some residual gas is left. In order to avoid accidents, make sure that the pistol is unloaded and the safety is "ACTIVATED" when removing or placing a CO2 bottle. Never use force to insert a CO2 bottle.

Keep the CO2 bottles away from heat and flames. Temperatures over 50° C (120° F) can cause explosion and injury. Never throw a CO2 bottle into a fire.

Always wear eye protection when handling CO2 bottles, since there is a risk of injury to the eyes. Do not remove a CO2 bottle until it is completely empty. Failure to observe this recommendation can result in a dangerous escape of residual gas.

Learning the Parts of Your New Soft Air Pistol
Learning the names of the parts of our new soft air pistol will help you to understand your owner's manual. Use this manual to increase your enjoyment of this soft air pistol. (Fig. 1)

WARNING Keep the pistol in the "ON SAFE" position until you are actually ready to shoot.

WARNING Use only 12 gram type CO2 cartridges.

WARNING If you are not going to use the pistol for a long period of time, we recommend removing the CO2 bottle.

- Insert CO2 Cartridge**
- Pull down moving grip to open position. (Fig. 3)
 - Load CO2 bottle. (Fig. 4)
 - Turn the tuner in CW direction to pierce CO2 bottle seal; turn to contact position and another 15 more to hear a "click" sound and feeling. (Fig. 5)
 - Push the moving grip back in left direction. (Fig. 6)
 - Pull trigger once to test if gas

WARNING CO2 cartridges may explode at temperatures above 120°F (48.9°C). Do not mutilate or incinerate them. Do not expose them to heat or store CO2 cartridges at temperatures above 120°F (48.9°C).

WARNING Keep hands and face away from escaping CO2 gas. It can cause frostbite if allowed to come in contact with skin.

WARNING Use only 12 gram type CO2 cartridges.

is ejected out properly. (Fig. 7)

- Load .177 Pellets**
- Using your right thumb, push the Safety button to Open position (Note 2).
 - Use left hand to dial cylinder. (Fig. 8)

- Load .177 Pellets into rotary magazine. (Fig. 9)
- Load .177 Pellets one at a time into disc. You can load up to eight .177 Pellets. (Fig. 10)
- Aim loader and insert rotary magazine until a click is heard. (Fig. 11)
- Push cylinder to position. (Fig. 12-13)

WARNING By safety consideration, be sure pushing the safety lock to ON right after each shot, take out the magazine and remove the unfired Pellets. Do not store the gun and .177 Pellets in a place that the ambient temperature is above 40°C.

WARNING Empty magazine shooting perhaps shorten gun life.

- Make sure the gun is pointed at a safe target. Once the last pellet has been shot from the gun, it is still possible for the trigger to be pulled, but only CO2 will be discharged.
- After shooting is complete, turn Safety lock to S (Safe) position. (see Item 2)

- Unload .177 Pellets**
- Use right thumb pushing safety to OPEN (Note 2).
 - Use left hand to dial cylinder. (Fig. 8)
 - Use left hand to push cylinder latch and push out the Pellet Rotary Magazine. (Fig. 16)

- Adjust Rear Sight**
- Make horizontal (right/left) adjustment. (Fig. 17)
 - Make vertical (up/down) adjustment. (Fig. 18)
- Note: The best-aimed condition is that the rear sight, front sight and target are aligned in a straight line. (Fig. 19)

WARNING

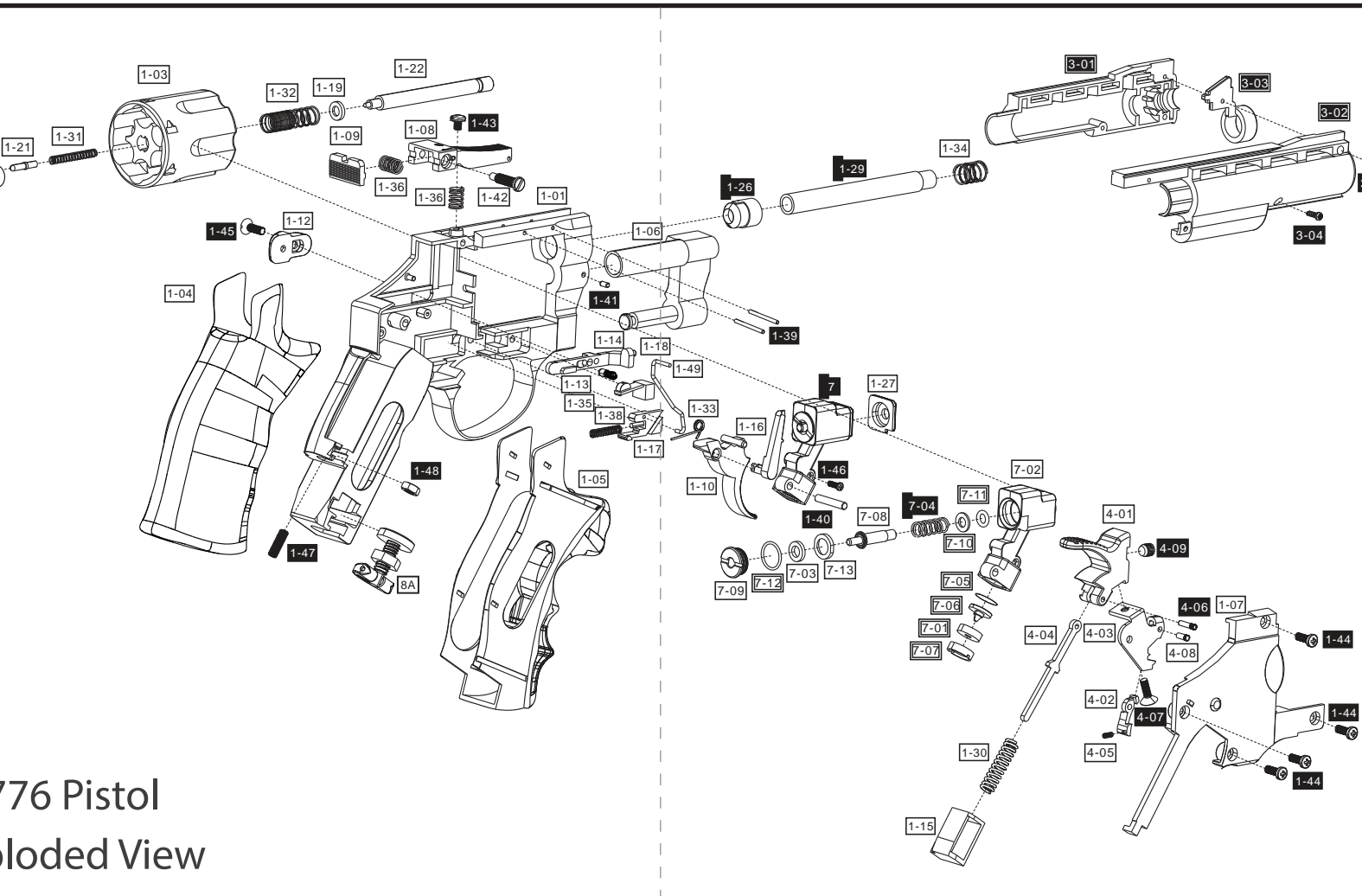
- If a Pellet does not fire after completing the operation steps, do not assume that the gun is unloaded. Keep the gun pointed in a safe direction.
- After a shooting is complete, the gun should be unloaded before storing it. To unload the gun always put ON safe "S" position, remove the CO2 cartridge, and remove the Pellets from the magazine.
- High temperatures can produce pressure in the CO2 cartridge and gun that is considerably higher than normal operating pressure. Such increased pressure may prevent the pistol from firing and may result in permanent damage to the gun. The maximum operating or storage temperatures can easily be reached if the gun is left directly in the sun on a bright, sunny day. Therefore the shooter should not expose the pistol to high temperature conditions or direct sunlight for any extended period of time.
- Rapid firing of the gun will cause temperature reduction in the pistol and CO2 gas. This will result in lower Pellet velocities and may even lower gas pressure enough so that the pistol will not fire. This condition can be avoided by allowing more time between shots. This permits the gas to increase in temperature and pressure, and produce normal velocities.
- Care should be exercised to ensure that the gun is not shot with a CO2 cartridge that is low in pressure because a Pellet may not be expelled from the barrel.
- A CO2 cartridge contains gas under pressure, whether or not it has been inserted into a gun. If exposed to high temperatures (such as inside of a closed car in direct sunlight), it could explode. Be sure to store all cartridge in a cool place.

ONE (1) YEAR LIMITED WARRANTY
GAMO warrants this product to be free of original defects in material and workmanship for one (1) year. This warranty applies only to goods purchased in the USA. At its option, GAMO will repair or replace this product without charge for parts and labor, providing our inspection indicates that an original defect exists. Should GAMO choose to replace the product, and the product is no longer available at the time warranty service is required, a substitution of similar performance and equal or greater value will be made. This warranty does not include damage caused by abuse, unauthorized repair or modification of any kind. There are no warranties that extend beyond the description on the face hereof. Gammo makes no implied warranty of merchantability or implied warranty of fitness (for a particular purpose). Some states do not allow limitations of implied warranty, so this limitation may not apply to you. In that event, any such implied warranty is limited to that required by law. GAMO shall not be liable for incidental or consequential damages, including but not limited to lost profits or other economic or commercial losses. The sole remedy provided in this warranty is repair or replacement of the product. To activate this warranty you must mail within 60 days the enclosed GAMO warranty card to:

GAMO OUTDOOR USA, Inc.
1700 N 2nd St, Rogers, AR 72756
Phone (800) 713-2479
E-Mail: info@gamouusa.com

Include with your product a note explaining the nature of the problem and be sure to indicate your name, address, and telephone number. Also include a check or money order in the amount of \$10.00 to cover postage and handling. In the event of a non-warranty repair, you will receive an estimate prior to any work being done. This warranty gives you specific legal rights and you may have other rights which vary from state to state. As defined by federal law, this is a limited warranty.

©2018 GAMO OUTDOOR USA, Inc. Printed in Japan • BD121014



PR776 Pistol Exploded View