

OWNER'S MANUAL



Stoeger[®]AIRGUNS

READ ALL INSTRUCTIONS AND WARNINGS IN THIS MANUAL BEFORE USING THIS AIRGUN.

Congratulations and thank you for purchasing your new STOEGER pellet airgun.

WARNING

THIS AIRGUN IS NOT A TOY. THIS AIRGUN IS TO BE USED BY ADULTS ONLY.

PLEASE READ THIS OWNER'S MANUAL COMPLETELY. ALWAYS TREAT YOUR AIRGUN AS YOU WOULD A REAL FIREARM.

WARNING

FOLLOW THIS OWNER'S MANUAL SAFETY INSTRUCTIONS CAREFULLY AND KEEP THIS MANUAL SAFELY FOR FUTURE USE. DO NOT SELL YOUR AIRGUN WITHOUT THIS OWNER MANUAL.

OWNER AND USER MUST KNOW AND OBEY ALL LOCAL LAWS ABOUT THE OWNERSHIP AND THE USE OF THIS AIRGUN.

CONTENTS

1	Airgun parts	9
2	Safety handling	10
3	Adjusting the trigger	10
4	Cocking	10
5	Loading	11
6	Shooting: aiming and firing	11
7	Airgun maintenance.....	11
8	Service and Repairs	12

Manual subject to modification without prior notice.

AIRGUN SAFETY

1. NEVER POINT AN AIRGUN AT SOMETHING THAT IS NOT SAFE TO SHOOT.

Never let the muzzle of an airgun point at any part of your body or at another person. This is especially important when loading or unloading the airgun.

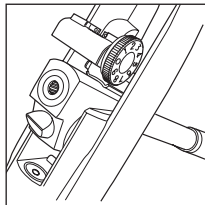
When you are shooting at a target, know what is behind it.

If you miss your target or if the pellet penetrates the target, it is your responsibility to ensure that the shot does not cause unintended injury or damage.



2. AN AIRGUN CAN CAUSE PERMANENT INJURY OR DEATH. ALWAYS TREAT AN AIRGUN AS A REAL FIREARM AND AS IF IT WAS LOADED.

Never assume that an airgun is unloaded. **The only certain way to ensure that an airgun is not loaded is to open the chamber and visually examine the inside to see if a pellet is present.** Airguns can be checked by opening the chamber so that a visual inspection of the chamber for any remaining pellet can be made.

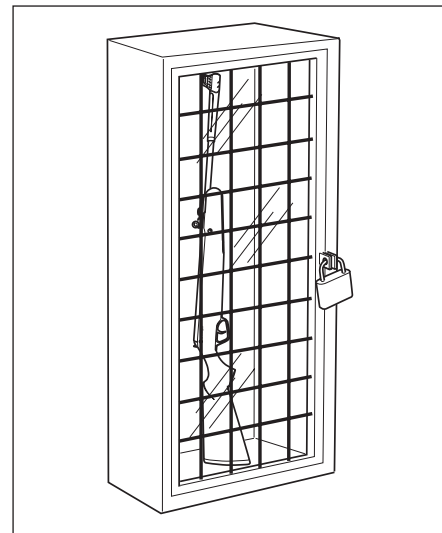


3. STORE YOUR AIRGUN SO THAT CHILDREN CANNOT GAIN ACCESS TO IT.

It is your responsibility to ensure that children under the lawful age of possession of an airgun or other unauthorized persons do not gain unsupervised access to your airgun.

To reduce the risk of accidents involving children, unload your airgun, lock it and store the pellets in a separate locked location.

Please note that devices intended to prevent accidents - for example, cable locks, chamber plugs, etc. - may not prevent use or misuse of your airgun by a determined person. Steel gun safes may be more appropriate to reduce the likelihood of intentional misuse of an airgun by an unauthorized child or person.



4. NEVER SHOOT AT WATER OR AT A HARD SURFACE.

Shooting at the surface of water or at a rock or other hard surface increases the chance of ricochets or fragmentation of the pellet, which can result in the projectile striking an unintended or peripheral target.



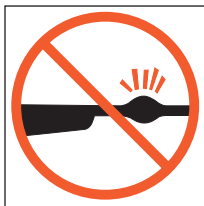
5. KNOW THE SAFETY FEATURES OF THE AIRGUN YOU ARE USING, BUT REMEMBER: SAFETY DEVICES ARE NOT A SUBSTITUTE FOR SAFE HANDLING PROCEDURES.

Keep your airgun on “safe” until ready to fire, but never rely solely on a safety device to prevent an accident. It is imperative that you know and use the safety features of the particular airgun you are handling, but accidents can best be prevented by following the safe handling procedures described in these safety rules and elsewhere in the product manual.

To further familiarize yourself with the proper use of airguns, take an airgun Safety Course taught by an expert in airgun use and safety procedures.

6. PROPERLY MAINTAIN YOUR AIRGUN.

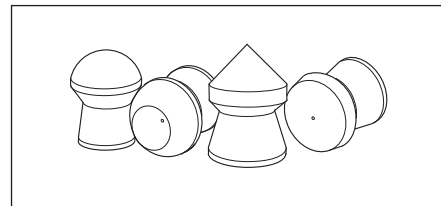
Store and carry your airgun so that dirt or lint does not accumulate in the working parts. Clean and oil your airgun, following the instructions provided your user’s manual, after each use to prevent corrosion, damage to the barrel or accumulation of impurities.



Always check the barrel prior to loading to ensure that it is clean and free from obstructions. **Firing against an obstruction can cause a dangerous build up of pressure and might injure yourself or others nearby.** If you hear an unusual noise when shooting, stop firing immediately, engage the manual safety and unload the airgun. Make sure the chamber and barrel are free from any obstruction.

7. USE PROPER PELLETS.

Be certain that each pellet you use is in the proper caliber for the airgun. The caliber of the airgun is clearly marked on the barrel of the airgun. The use of low quality pellets may affect the accuracy or obstruct the barrel by accumulation of pellets inside the barrel.



8. ALWAYS WEAR PROTECTIVE GLASSES WHEN SHOOTING.

A pellet or pellet fragments can blow back or ricochet and cause serious injury including the possible loss of eyesight. The shooter and bystanders must always wear impact resistant shooting glasses when firing any airgun.



9. NEVER CLIMB A TREE, FENCE OR OBSTRUCTION WITH A LOADED AIRGUN.

Open barrel before climbing or descending a tree or before climbing a fence or jumping over a ditch or obstruction. Never pull or push a loaded airgun toward yourself or another person.



10. AVOID ALCOHOLIC BEVERAGES AND JUDGMENT OR REFLEX IMPAIRING MEDICATION WHEN SHOOTING.

Do not drink and shoot. If you take medication that can impair motor reactions or judgment, do not handle an airgun while you are under the influence of the medication.



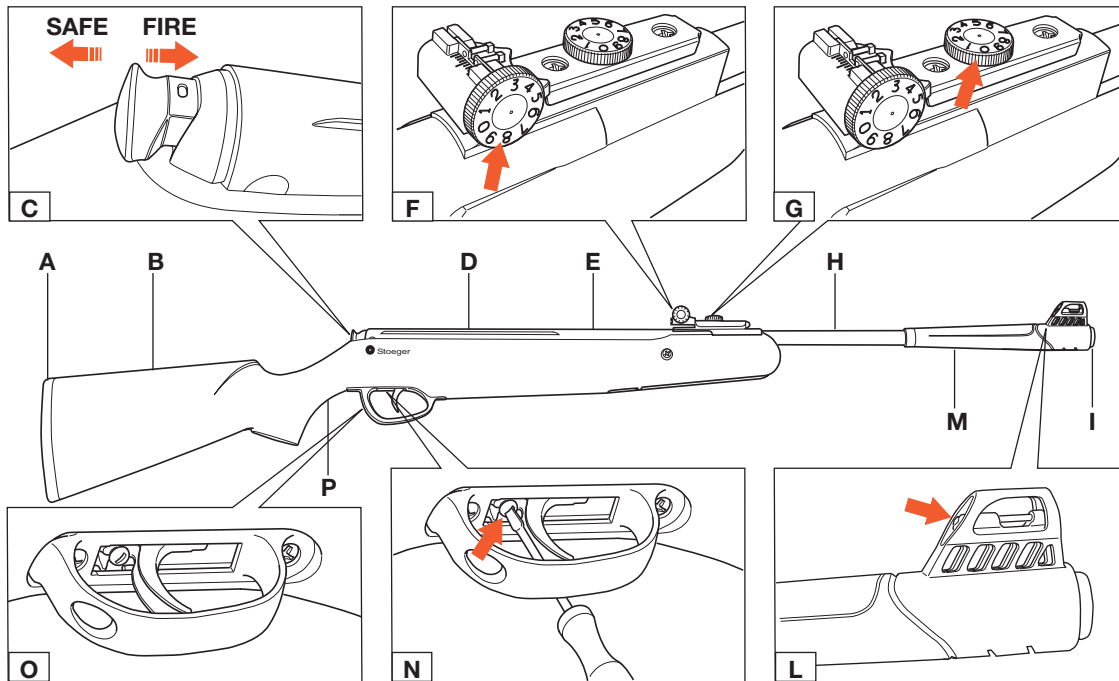
11. NEVER TRANSPORT A LOADED AIRGUN.

Unload an airgun before putting it in a vehicle. Hunters and target shooters should load their airgun only at their destination.



12. NEVER FIRE YOUR AIRGUNS WITHOUT PELLETS IN THE CHAMBER.

This may permanently damage your rifle.



1 AIRGUN PARTS

- A Butt pad
- B Stock
- C Safety
- D Rail for scope mount

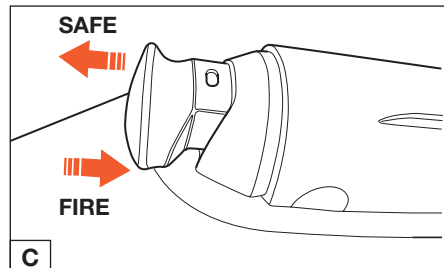
- E Compression cylinder
- F Windage adjustment screw
- G Elevation adjustment screw
- H Barrel
- I Muzzle

- L Front sight with fiber optic
- M Grip
- N Trigger adjustment screw
- O Trigger guard
- P Pistol grip

2 SAFETY HANDLING

Your airgun has an automatic locking safety which engages automatically when you cock your gun. The safety slide is situated at the end of the compression tube (**fig. C**):

- Back = safe
Safety button fully rearward - white dot visible - the safety is in the "ON" or "Safe" position
- Forward = fire
Push the safety button fully forward - white dot not visible - to put the safety in the "OFF" or "Fire" position.

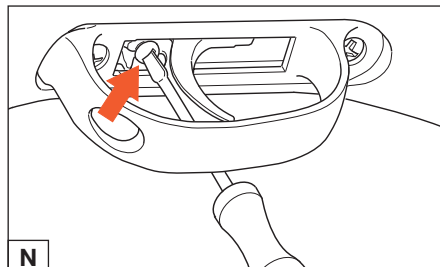


3 ADJUSTING THE TRIGGER

Trigger pull is adjusted in the factory, and does not need adjustment for most shooters. This two stage trigger has an adjusting screw for second stage length adjustment (**fig. N**).

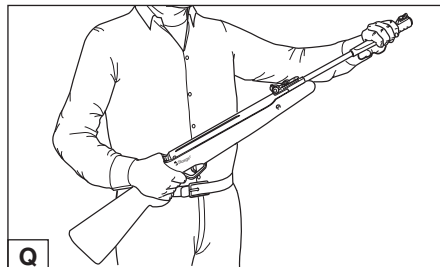
This feature is for experienced shooters on models X10 and X20.

- To reduce second stage length, turn screw clockwise.
- To increase second stage length, turn screw counter clockwise.

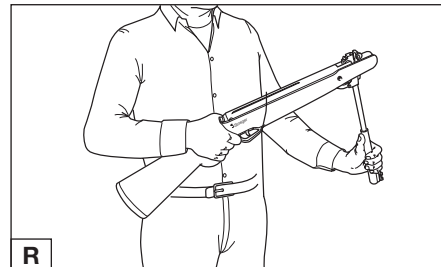


4 COCKING

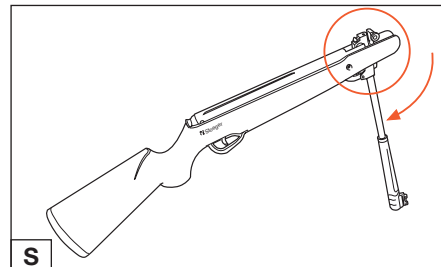
Point the airgun in safe direction while keeping your finger off the trigger (**fig. Q**).



With one hand grasp stock at the pistol grip. Holding the rifle firmly, **tap barrel behind front sight** in order to break locked position (**fig. R**).

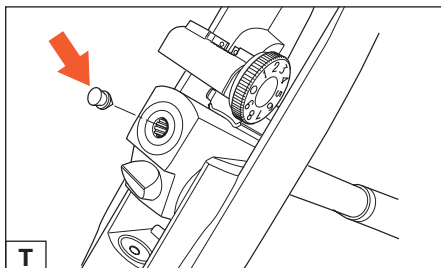


Grasp barrel behind the front sight and pull downward until it stops. You will hear an audible click of the trigger mechanism lock when the pressure is released. You must control, and not release, the barrel under strong resistance until the audible click is heard. Be careful not to pinch your hand or fingers in the hinge area (**fig. S**).



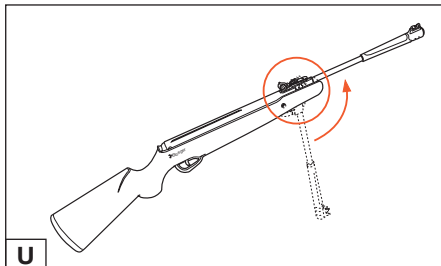
5 LOADING

Check pellet to ensure it matches the caliber of the airgun. Insert pellet into the breach until skirt is flush with breech face (fig. T).



Move barrel back to its original locked position.

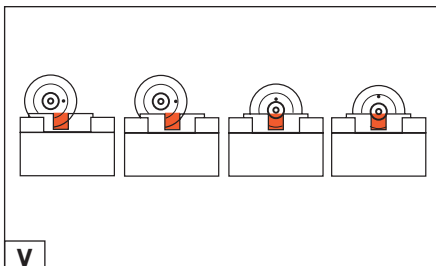
Again, be careful not to pinch your hand or fingers in the hinge area (fig. U).



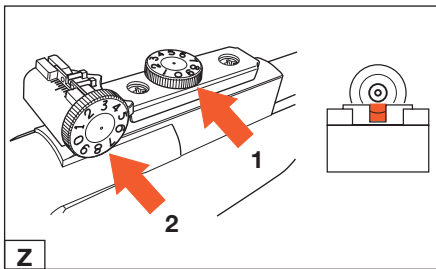
6 SHOOTING: AIMING AND FIRING

Keep finger outside trigger guard until on target, push safety button fully forward, squeeze trigger. Safety can be put back to “On” or “Safe” positions at any time by pulling fully rewarded (white dot visible).

A) Wrong (fig. V)



B) Right (fig. Z)



Your airgun is equipped with an adjustable rear sight for both elevation (1) (up-down) and windage (left-right) (2).

Elevation settings are marked on the elevation knob and controlled by turning elevation control screw 1.

- Turn clockwise to make the airgun shoot lower
- Turn counter clockwise to make the airgun shoot higher

Left or Right windage settings are marked on the sliding scale and controlled by turning windage screw 2.

- Turn clockwise to make the pellet hit to the right
- Turn counter clockwise to make the pellet hit to the left

The scale and numbers are for reference only, and do not represent a specific distance at the target.

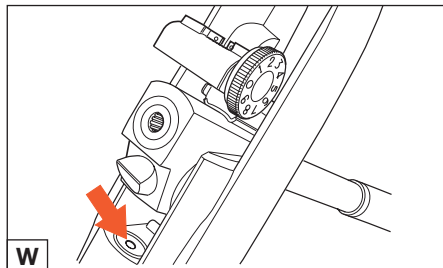
7 AIRGUN MAINTENANCE

Airgun care requires very little cleaning and maintenance.

Mechanicals parts:

Barrel should be cleaned before storage or at least after 500 shots with a cleaning rod (avoid brass brushes for rifling preservation), or cleaning pellets to be fired as a real pellet. You can apply a drop of gun oil into the breach.

Every 1000 shots, apply a drop of gun lubricant into the compression chamber (fig. W).



Blued parts as barrel and compression cylinder should be protected from rusting. Maintain protection by wiping these parts with a lightly oiled pad.

All visible mechanicals parts, breach, trigger, safety may be lightly oiled as needed to maintain a proper function.

Stock care:

Synthetic stocks require no maintenance except wiping clean and drying with a soft cloth or towel. Wooden stocks should only be stored at room temperature because excessive heat can crack them. A wooden stock can be polished with oil and a soft cloth.

Storage:

- Do not leave the rifle in the cocked position, as this weakens the mainspring.
- Decock your airgun by firing in a safe direction and always strictly respect all safety rules.
- Do not leave the rifle in humid environment.

WARNING

- **Do not attempt to disassemble your airgun. Take or send it to an authorized service station.**
- **Do not modify your airgun, handling it in a different manner as described in this manual, as this could make your gun unsafe and you will void the warranty.**
- **Any modification may make the gun unsafe to use, and cause serious injury or death.**
- **Do not fire the airgun without pellet in the chamber (dry fire) as this may damage you airgun permanently.**

8 SERVICE AND REPAIRS

Call STOEGER INDUSTRIES (301) 283 6300 and ask for the Service Department. It is possible that our Service personnel and gunsmiths will be able to help you over the phone.

In the event this is not possible, authorized service and repairs will be issued a RA (Return Authorization) Number. Write this number boldly on the box. Include a note in the box stating the defect or problem along with your name, address and phone number. Return prepaid to:

STOEGER INDUSTRIES

Airgun division
801 Broad Street
Pocomoke, MD 21851

Warranty Claims

All Stoeger Airguns carry a limited 2 year warranty.

Stoeger Industries to You - This new Stoeger Airgun is warranted only to the original retail purchaser, for two years from the date of purchase. This warranty applies only if the product was purchased from an authorized Stoeger reseller in United States.

Stoeger will at its option, repair or replace without charge any product fails due to a defect in workmanship or materials. Parts and labor are included. Repairs are warranted for the duration of the original warranty. If Stoeger replaces an airgun under its original warranty, you will receive a new two year warranty. Stoeger will return replacement airgun to you freight prepaid.

To Obtain Warranty Service - You must send your airgun freight prepaid to Stoeger Industries at the address listed above. No C.O.D. shipments will be accepted. Only the Stoeger reape facility in Maryland is authorized to make warranty repairs. **DO NOT PACK OR SHIP LOADED AIRGUNS.**

Return the complete unloaded airgun with a detailed description of the problem. You must provide Stoeger satisfactory proof of the date of original purchase if the warranty registration is not on file. Only a sales receipt or properly completed warranty registration card for a new Stoeger airgun will establish eligibility for warranty repairs when a product is returned. You must provide proof of the date you purchased a new Stoeger product at the time you send a product for warranty repair.

What is Not Covered - The warranty does not cover defects or damage caused by:

- 1) Misuse or accident
- 2) Failure to provide proper care and maintenance
- 3) Failure to comply with instructions in the owner's manual
- 4) Normal wear and tear
- 5) Rust or corrosion
- 6) Obstruction in the barrel.

All wooden parts are excluded from warranty repairs. This warranty does not cover claims made by the subsequent owner of any Stoeger product.

ANY UNAUTHORIZED ALTERATION OR MODIFICATION OF THE AIRGUN WILL VOID THE WARRANTY.

STOEGER SHALL NOT BE RESPONSIBLE FOR ANY CLAIMS INVOLVING AIRGUN THAT RESULT FROM THE USE OF NON STANDARD OR REUSED PELLETS.

IN NO EVENT SHALL STOEGER INDUSTRIES BE LIABLE FOR CONSEQUENTIAL DAMAGES. Some states do not allow the exclusion or limitation of incidental or consequential damages, so the above limitation or exclusion may not apply to you. The warranty gives specific legal rights, and so you may also have other rights which vary from state to state.

Stoeger Industries authorizes no dealer or any other person to vary the terms of this warranty or make any other express warranties.

Where to get Further Help - If you have any questions concerning this warranty, please contact:

- Stoeger Industries (301) 283-6300 or
- Stoeger Industries
17603 Indian Head Highway,
Accockeek, MD 20607-2501.



Stoeger® AIRGUNS

4x32 scope with 2 ring mount Riflescope operating instructions

Congratulations and thank you for purchasing your new STOEGER SCOPE.

IMPORTANT: READ ALL INSTRUCTIONS CAREFULLY BEFORE USING THIS SCOPE. THIS MANUAL SHOULD ACCOMPANY THE SCOPE IN CASE OF CHANGE OF OWNERSHIP.

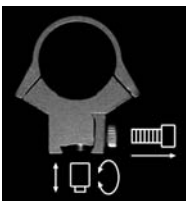
Be sure that your airgun is not loaded before fitting scope and mount onto the rifle. Always follow safety procedures.

Do not look through the scope at the sun as it may cause permanent damage to your eyes.

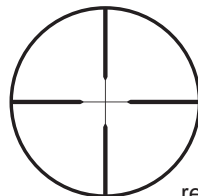


Remove upper halves of rings, place one lower part on the airgun rail with stop pin in on model X5 and coming out if you install on model X10. On X10, place the stop pin it in stop notch in the back of the rail. Tighten side screw. Place second lower part in front of the rail. Place scope in cradle formed by both lower halves rings. Slide scope back and forth while looking through the scope eye piece until you have a fully lit field of view.

Be sure to have right distance between your eye and eye piece, around 8cm / 3,1" is standard. Rotate the scope to align the reticle horizontally and vertically. Then replace upper halves of rings and tighten ring screws completely.



stop pin



reticle

Adjusting and sighting in:

Since zeroing involves actual shooting of live pellets, it should be done at an approved shooting range. Benchrest the airgun. Remove the windage and elevation caps. Fire 3 pellets at the target which is set at 30yards from where you are shooting:

Point of impact can be adjusted by turning the elevation and windage screws:

- shooting low, turn elevation screw toward "UP"
- shooting right, turn windage screw toward "L"

Taking care of your scope:

When not in use, the scope should be kept in a clean, dry and ventilated place away from any corrosive material.

Never try to take the scope apart or clean internally. Send your scope to qualified service station if it never need repair. Lens surface may be cleaned with lens cloth. Keep lens covered when scope not in use.

Service and Repairs

Contact your dealer for first assistance or the official distributor in your country.

www.stoegerairguns.com: online you will find the distributor list.

Warranty: 2 years from the purchase date for all Stoeger scopes.

Incidental damages, consequential damages to non-manual advices respect and non-authorized disassembling are excluding the scope from the warranty.

Technical specifications

	4x32 scope		2 ring high power mount	
	mm	inch	mm	inch
Length	295	11,6		
Tube diameter	25,4	1	25,4	1
	g	lbs	g	lbs
Weight	290	0,64	60	0,13

USA

Stoeger Industries

17603 Indian Head Highway

Accokeek, MD 20607-2501

+1 301-283-6300

www.stoegerindustries.com

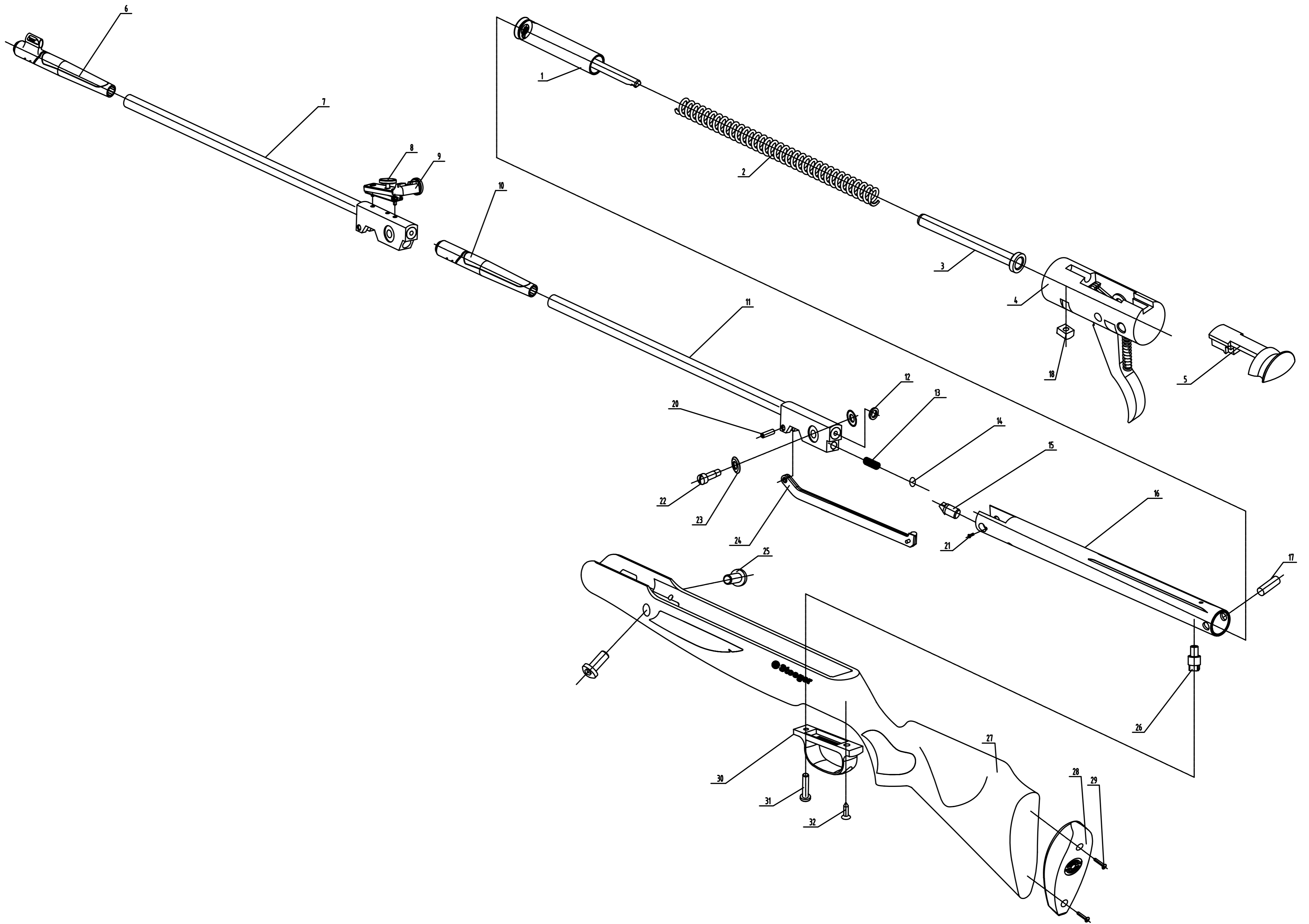
EUROPE, Canada, Australia-New Zealand and other countries

Contact your dealer

or the official distributor in your country

listed on the web

www.stoegerairguns.com





Stoeger AIRGUNS

X5

	No.	Code Name	Part Name	X5	X5 COMBO
CANADA	1a	B12-2-05-00(6J)	Piston Assembly	1	1
GERMANY ITALY RUSSIA LITHUANIA	1b	B12-3-05-00(7.5J)	Piston Assembly	1	1
ALL OTHER COUNTRIES	1c	B12-04-00C(full power)10J	Piston Assembly	1	1
SAME SPRING FOR ALL COUNTRIES	2	B12-00-2	Piston Spring	1	1
	3	B12-00-3	Spring Guide	1	1
	4	B12-05-00B	Trigger Pack Assembly	1	1
	5	B12-2-04-00	Safety Assembly	1	1
	6	B12-2-00-1	Muzzle Break	1	
	7a	B12-2-01-100	Barrel Assembly 4,5mm	1	
	7b	B12-2-01-100(5.5)	Barrel Assembly 5,5mm		
	8	B12-02-100A	Sight Adjusting Bolt	1	
	9	B12-2-03-00	Rear Sight Assembly	1	
	10	B12-2X-00-1	Muzzle Break		1
	11a	B12-2X-01-100	Barrel Assembly 4.5mm		1
	11b	B12-2X-01-100(5.5)	Barrel Assembly 5.5mm		1
	12	B12-00-14	Breach Seal	1	1
	13	B12-01-2	Spring	1	1
	14	GB/T 308-1989 8	Steel Balls	1	1
	15	B12-1-00-2	Detent	1	1
	16	B12-03-00C	Tube Assembly	1	1
	17	B12-00-5A	Tube Pin	1	1
	18	B12-00-15A	Nuts	1	1
	19	4*32	Scope with 2 rings mount		1
	20	B12-00-1A	Lever Pin	1	1
	21	B12-00-10A	Screws	1	1
	22	B12-00-11	Break Bolt	1	1
	23	B18-00-15A	Break Washer	2	2
	24	B12-1-00-9	Lever	1	1
	25	GB/T 70.1-2000 M5X14	Bolt	2	2
	26	B12-00-8	Stock Bolt	1	1
Includes one Stock pad and two screws	27	B12-2-02-00	Stock assembled	1	1
	28	B12-2-00-2	Trigger Guard	1	1
	29	B12-2-00-3	Front Screw	1	1
	30	GB/T 847 ST3.5X13	Rear Screw	1	1