

## OPERATION MANUAL



### PRODUCT FEATURES

- **Limited maintenance design.**
- **Auto shut off and pressure adjustable.**
- **12 volt or 110v/220v.**
- **Compact and very quiet.**
- **Serviceable with parts in the USA.**
- **No water or oil needed totally self-contained.**

### 1. ACCESSORY PACKAGE CONTENTS

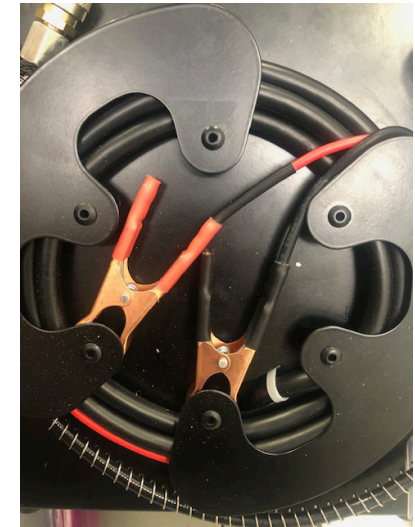
NO.	DESCRIPTION	QTY	#
1	7mm Allen Wrench	1	
2	5mm Allen Wrench	1	
3	4mm Allen Wrench	1	
4	3mm Allen Wrench	1	
5	2.5mm Allen Wrench	1	
6	2mm Allen Wrench	1	
7	Spring	2	38
8	19mm Socket Spanner	1	
9	Burst Disc	7	84
10	1st Stage piston ring	1	69
11	12mm-14mm Wrench	1	
12	14mm-17mm Wrench	1	
13	Pull Rod	1	
14	5mm Steel Ball	2	32

### 2. WARNINGS AND PRECAUTIONS

- Never pressurize a vessel beyond its recommended fill pressure.
- Never try and remove fill whip while connected and under pressure.
- Never plug the 110 volt and 12 volt in at the same time.
- Never open the compressor case while attached to power.
- Never leave the compressor unattended while running.
- Never loan your compressor to a child under 18 years of age.
- Always keep your compressor dry and away from liquids such as rain or anything flammable.
- Never wash your compressor off with any liquids only towel off dry.
- IF you have any safety concerns contact your distributor before using.
- Never fill tanks larger than 350cc in one run.
- Always inspect your compressor for damage before using.
- Never use the compressor to fill anything other than PCP guns.
- DO NOT fill breathing apparatuses with this compressor. Warning! This compressor does not supply breathable air.
- Make sure the RED cable of the compressor goes to positive and BLACK lead to negative on the car battery.
- USE only 12 volt batteries to run the compressor off its 12 volt leads.
- DO NOT run compressor for more than 20 minutes at a time with a 4 minute fan cool off period between fills.
- DO NOT hold the compressor while filling keep it on a flat surface free of tipping.
- DO NOT run the compressor in a moving vehicle.
- DO NOT run the compressor if you hear any strange noises or see anything you believe is not right.

### WARNINGS AND PRECAUTIONS

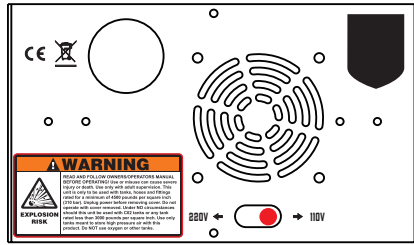
### 3. OPERATING INSTRUCTIONS



#### 12V OPERATION

1. Ensure that the power switch of the machine is in the off position and the bleed valve is open.
2. Take out the 12v harness from the side winding disc, clamp the BLACK clip on the negative pole of the car battery and the RED clip on the positive side then start the car.
3. Pull out the test plug from the fill whip and store it (the test plug is an important part to check and analyze the machine)
4. Connect the quick fill connector to the foster fitting of your gun.
5. Adjust the pressure gauge needle to the desired pressure.
6. Switch the power button to 12v, you should hear the fans running now.
7. Push the start button then close the bleeder. DO NOT leave the machine unattended!
8. After the desired pressure is reached and the machine auto stops open the bleeder and remove fill whip, continue to let the fans run for 2-4 minutes to cool machine
9. Turn the power switch off and remove cables from the battery and store them back into position.
10. Reinstall the deadhead plug into fill whip and store whip back into position on the machine.

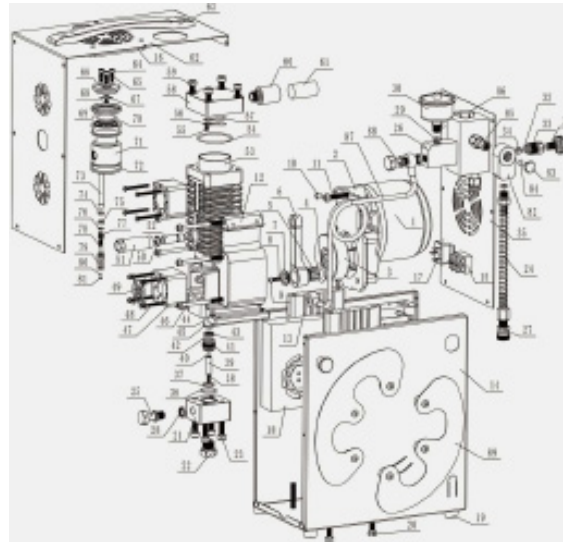
#### 4. 110v/220v OPERATION



**WARNING: SWITCH VOLTAGE SWITCH TO 110V**

1. Ensure that the power switch of the machine is in the off position and the bleed valve is open.
2. For 110 volt operation plug the cord into the machine and then the wall.
3. Plug the quick fill connector to the gun.
4. Set the pressure gauge needle to desired pressure.
5. Turn the power switch to AC at this point the fans should be running.
6. Open bleed valve and press start button then close bleed valve.
7. When the machine auto stops open bleed valve and remove fill whip.
8. Put the dead head back onto quick connector and store whip back on machine.
9. Turn the power switch to off position then remove power cable from wall and then machine and store it.

#### 5. DIAGRAM AND SPARE PARTS LIST



NO.	DESCRIPTION	NO.	DESCRIPTION	NO.	DESCRIPTION
1	Motor	31	Bleed valve	61	air intake filter
2	motor plate	32	bleed valve ball	62	top shell steel
3	Crankshaft	33	bleed valve socket	63	The handle
4	rod bushing	34	bleed valve seal	64	upper piston reed screws
5	rod bearing	35	front shell steel	65	upper piston reed mount washers
6	Connecting rod	36	large oring lower head	66	The piston plate
7	connecting rod cap	37	small oring lower head	67	reed valve small
8	rod washer	38	lower check valve	68	reed valve small screws
9	rod screw	39	check valve	69	First stage piston ring
10	alignment sleeve case	40	check valve ball	70	oring small reed plate
11	case bolt	41	check valve mount	71	The primary piston
12	The case	42	check valve seat	72	guide ring piston large
13	rubber case mounts	43	check valve oring	73	High pressure piston rod
14	lower shell steel	44	high pressure piston sleeve	74	high pressure ring #1
15	switch	45	head oring lower	75	high pressure ring #2
16	top fan	46	case bolt lower	76	high pressure piston spacer
17	110/220 volt plug	47	#1 cooling fan	77	High pressure piston spring
18	Power converter	48	cooling fan mount screw	78	high pressure piston ring mount
19	foot	49	fan protector	79	high pressure piston ring #3
20	mount bolts	50	circlip crank rod	80	high pressure check ball
21	lower head HP	51	exhaust pipe	81	high pressure check ball spring
22	Check valve nut	52	Connecting rod pin	82	swivel joint
23	lower head nut	53	Primary cylinder liner	83	burst disk mount
24	High pressure hose	54	upper cylinder head oring	84	burst disc
25	banjo bolt	55	screw head reed	85	banjo fitting fill whip
26	gauge block	56	reed valve plate	86	Threaded plug
27	Quick connector	57	reed valve plate	87	steel pressure line
28	sealing washer	58	First stage cylinder head	88	banjo bolt steel line
29	Nylon gasket (white)	59	head screws upper cylinder	89	steel case spool
30	Pressure gauge	60	air intake		

#### 6. WARRANTY

This product is warranted to the retail consumer for 1 year from the date of purchase against defects in material and workmanship and is not transferable.

##### WHAT IS COVERED

Replacement parts and labor.

##### WHAT IS NOT COVERED

Shipping charges to Xisico USA/JTS Airguns for defective product and damages caused by abuse or failure to perform normal maintenance as well as any other expense. Consequential damages, or incidental expenses, including damage to property. Some states do not allow the exclusion or limitation of incidental or consequential damages, so the above limitation or exclusion may not apply to you.

##### WARRANTY CLAIMS

Warranty Claims and Repair for U.S. and Canadian customers only. Please contact Xisico USA/JTS Airguns at 281-647-9130

##### IMPLIED WARRANTIES

Any implied warranties, including the implied warranties of merchantability and fitness for a particular purpose, are limited in duration to 1 year from date of retail purchase. SOME STATES DO NOT ALLOW LIMITATIONS ON HOW LONG IMPLIED WARRANTY LASTS, SO THE ABOVE LIMITATIONS MAY NOT APPLY TO YOU. TO THE EXTENT ANY PROVISION OF THIS WARRANTY IS PROHIBITED BY FEDERAL, STATE, OR MUNICIPAL LAW; WHICH CANNOT BE PREEMPTED, IT SHALL NOT BE APPLICABLE. THIS WARRANTY GIVES YOU SPECIFIC LEGAL RIGHTS, AND YOU MAY ALSO HAVE OTHER RIGHTS, WHICH VARY FROM STATE TO STATE AND COUNTRY TO COUNTRY. WARRANTY VIOLATIONS

##### THE FOLLOWING WILL VOID YOUR WARRANTY:

Physical abuse  
internal upgrades

For more information and video tutorials please visit our website at

Website: [www.jtsairguns.com](http://www.jtsairguns.com)

YouTube: [https://www.youtube.com/channel/UCQjKq7gJcdQP5mXi\\_v9M\\_ag](https://www.youtube.com/channel/UCQjKq7gJcdQP5mXi_v9M_ag)

<b>Item Name: JAC030</b>	<b>Description: JTS COMP1</b>
<b>Power: 250W</b>	<b>Max Pressure: 4500psi</b>
<b>Air Output: 11 l/min</b>	<b>Maximum current: 25A</b>
<b>AC110V/220V or DC12V</b>	<b>Air cooled</b>
<b>Weight: 19.8lbs/9kg</b>	



**Distributed by**  
**Xisico/JTS Airguns**  
**7724 Cherokee Street**  
**Katy, TX 77494**

[www.jtsairguns.com](http://www.jtsairguns.com)

**EXCELLENCE THROUGH INGENUITY™**