

# BENJAMIN TRAVELER™ PORTABLE HIGH PRESSURE AIR COMPRESSOR OWNER'S MANUAL

READ ALL INSTRUCTIONS AND WARNINGS IN THIS MANUAL BEFORE USING

Crosman Corporation  
7629 Routes 5 & 20  
Bloomfield, NY 14469  
United States of America  
www.crosman.com  
1-800-7AIRGUN (724-7486)  
Made in China

BPC4500-515

If you have any questions, contact Crosman at 1-800-724-7486, 585-657-6161 or crosman.com.

**NOTE:** Compressor is not designed for use with Airgun/Paintball cylinders larger than .6L (600cc).

**NOTE:** High altitude and certain air temperatures can impact the compressor's performance.

## 1. IMPORTANT SAFETY INFORMATION

**WARNING:** WHEN USING THIS COMPRESSOR, ALWAYS USE COMMON SENSE AND FOLLOW BASIC SAFETY PRECAUTIONS TO REDUCE THE RISK OF SERIOUS INJURY OR DEATH WHEN USING THIS PRODUCT.

ADULT SUPERVISION IS ALWAYS REQUIRED WHEN USING THIS COMPRESSOR.

ALWAYS STORE COMPRESSOR IN A SAFE LOCATION OUT OF REACH OF CHILDREN AND ANYONE UNFAMILIAR WITH ITS PROPER USE OR CARE.

THE COMPRESSOR MAY BECOME HOT DURING USE. PLEASE USE CAUTION WHEN TOUCHING THE COMPRESSOR IN ORDER TO AVOID BURNS. USE THE COMPRESSOR'S CARRY HANDLE WHEN HANDLING AND ALLOW THE UNIT TO COOL BEFORE STORING.

### 1.1 Risk of Electrical Shock



- OPERATE COMPRESSOR ONLY WITH A PROPERLY CONNECTED 12 VOLT DC BATTERY (IF USING BATTERY TERMINAL CLAMPS); OR (IF USING THE AC CONVERTER) WITH A PROPERLY GROUNDED OUTLET WHICH PROVIDES CORRECT VOLTAGE (110 VOLT AC) AND ADEQUATE FUSE PROTECTION. DISCONNECT AFTER USE.
- DO NOT EXPOSE COMPRESSOR TO RAIN OR OPERATE IN A WET AREA.
- CHECK POWER CORDS, CABLES AND TERMINAL CLAMPS FOR SIGNS OF WEAR AND TEAR, CRUSHING OR HEAT DAMAGE. REPLACE FAULTY ITEMS BEFORE USE.
- NEVER OPERATE COMPRESSOR WITH COVERS REMOVED.
- ALWAYS DISCONNECT COMPRESSOR FROM ELECTRICAL SUPPLY CIRCUIT BEFORE SERVICING. ANY WIRING OR ELECTRIC REPAIRS DONE ON THIS COMPRESSOR SHOULD BE DONE ONLY BY AUTHORIZED SERVICE PERSONNEL IN ACCORDANCE WITH NATIONAL AND LOCAL CODES.

### 1.2 Risk of Explosion or Fire



- ALWAYS OPERATE COMPRESSOR IN A WELL VENTILATED AREA FREE OF FLAMMABLE VAPORS, COMBUSTIBLE DUST, GASES OR OTHER COMBUSTIBLE MATERIALS.
- DO NOT EXCEED 176°F (80°C).
- NEVER LEAVE THE COMPRESSOR UNATTENDED WHILE OPERATING.
- NEVER PLACE OBJECTS AGAINST OR ON TOP OF COMPRESSOR.
- OPERATE COMPRESSOR 12 INCHES AWAY FROM ANY WALL OR OBSTRUCTIONS THAT WOULD RESTRICT PROPER VENTILATION.
- NEVER OVERRIDE OR DISABLE THE COMPRESSOR'S TEMPERATURE PROTECTION CUTOFF FEATURE.
- ALWAYS ALLOW THE UNIT TO COOL BEFORE STORING.

### 1.3 Risk of Bursting



- NEVER EXCEED MANUFACTURER'S MAXIMUM ALLOWABLE PRESSURE RATING OF CYLINDERS AT ROOM TEMPERATURE. SERIOUS INJURY OR DEATH MAY OCCUR FROM A COMPRESSOR MALFUNCTION OR EXPLODING ACCESSORIES IF INCORRECT SYSTEM COMPONENTS, ATTACHMENTS OR ACCESSORIES ARE USED.
- NEVER LEAVE THE COMPRESSOR UNATTENDED WHILE OPERATING.
- NEVER USE COMPRESSOR TO INFLATE SMALL, LOW PRESSURE OBJECTS SUCH AS TOYS.

### 1.4 Risk of Inhalation



- AIR FROM THE COMPRESSOR MAY CONTAIN TOXIC VAPORS OR SOLID PARTICLES.
- NEVER INHALE AIR FROM THE COMPRESSOR EITHER DIRECTLY OR FROM A BREATHING DEVICE CONNECTED TO THE COMPRESSOR.

### 1.5 Risk of Flying Objects



- ALWAYS WEAR EYE PROTECTION TO SHIELD THE EYES FROM FLYING DEBRIS.
- NEVER LEAVE PRESSURIZED AIR IN COMPRESSOR. SHUT OFF COMPRESSOR AND RELIEVE PRESSURE WHEN STORING OR ATTEMPTING MAINTENANCE.
- AVOID HOSE WHIP BY BLEEDING HOSE FIRST BEFORE DISCONNECTING HOSE FROM COMPRESSOR.
- DO NOT MOVE COMPRESSOR WHILE CYLINDER IS UNDER PRESSURE.
- DO NOT ATTEMPT TO MOVE COMPRESSOR AND/OR CYLINDER BY PULLING ON THE HOSE.

### 1.6 Precautions when Working with 12 VOLT DC Batteries – Explosion and Fire Hazard



- MAKE SURE THE AREA AROUND THE BATTERY IS WELL VENTILATED.
- NEVER SMOKE OR ALLOW A SPARK OR FLAME IN VICINITY OF THE ENGINE OR BATTERIES.
- BE CAREFUL NOT TO DROP A METAL OBJECT ON THE BATTERY OR ALLOW A METAL TOOL TO SIMULTANEOUSLY TOUCH THE POSITIVE AND NEGATIVE CABLE ENDS OR BATTERY TERMINALS. IT MIGHT SPARK OR SHORT-CIRCUIT THE BATTERY OR OTHER ELECTRICAL PARTS AND CAUSE EXPLOSION.
- REMOVE PERSONAL METAL ITEMS SUCH AS RINGS, BRACELETS, NECKLACES, AND WATCHES WHEN WORKING WITH BATTERIES. BATTERIES PRODUCE A SHORT-CIRCUIT CURRENT HIGH ENOUGH TO WELD A RING OR OTHER SIMILAR OBJECT TO METAL AND CAUSE A SEVERE BURN.

### 1.7 Temperature Protection Cutoff Feature

- To prevent the compressor from overheating, the compressor is equipped with an automatic Temperature Protection cutoff feature that will automatically shut off the compressor if its internal temperature reaches and/or exceeds 176°F (80°C).

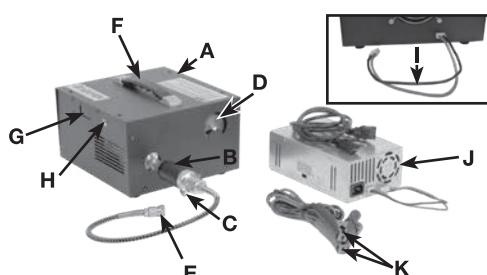
**NOTE:** If the compressor does not shut off, manually shut off the compressor and contact customer service before using again.

- If the protection circuit activates, safely and immediately disconnect the unit from the power source and allow it to cool. It may take up to 15 minutes or more depending on the environmental conditions at your location for the compressor to sufficiently cool down.
- The protective circuit will automatically reset itself when the temperature returns to a safe operating level.

**WARNING:** THIS PRODUCT CONTAINS ONE OR MORE CHEMICALS INCLUDING LEAD, WHICH IS KNOWN TO THE STATE OF CALIFORNIA TO CAUSE CANCER AND BIRTH DEFECTS OR OTHER REPRODUCTIVE HARM. FOR MORE INFORMATION GO TO WWW.P65WARNINGS.CA.GOV.

## 2. LEARNING THE PARTS OF YOUR COMPRESSOR

Learning the names of the parts of your compressor will help you understand your owner's manual.



- A. Compressor
- B. Oil-Water Separator
- C. Bleed Screw
- D. Pressure Gauge
- E. Quick Connect Foster Fitting
- F. Carry Handle
- G. Temp/Voltage Indicator
- H. Start/Stop Button
- I. Power Input (12v)
- J. Plug In Voltage Converter
- K. Battery Clamps

## 3. ASSEMBLY INSTRUCTIONS

1. Locate the male foster fitting on the compressor (Fig. 2A).
2. Connect the high pressure hose to the compressor using the quick connector (Fig. 2B).

**NOTE:** Either end of the high pressure hose will work.

3. Depending on which power source option you choose, connect either the battery clamp cables or the 110 Volt AC Converter to the compressor and follow the respective operating instructions below in Section 4.

## 4. OPERATING INSTRUCTIONS

The compressor is equipped with an automatic timer cutoff feature that will automatically shut off the compressor after 25 minutes of continuous operation.

**NOTE:** If the compressor does not shut off, manually shut off the compressor and contact customer service before using again.

**IMPORTANT:** To protect the compressor's fuse and to avoid hose whip, ALWAYS bleed the air first after every use of the compressor.

### A. Setting the Output Pressure (Auto Shut Off)

The compressor is equipped with an automatic pressure cutoff feature that will automatically shut off the compressor once the compressor reaches the set desired pressure.

**NOTE:** If the compressor does not shut off, manually shut off the compressor and contact customer service before using again.

Setting the max output pressure on your compressor is a two prong system. The left prong is used to set the minimum fill pressure and should always remain at the zero (0) (Fig. 3). The right prong is used to set the maximum fill pressure (Fig. 3). The white spring loaded dial on the top of the gauge allows you to adjust the prongs.

1. Using a small flat head screw driver, rotate the white spring loaded adjustment dial:
  - \* To increase the max fill pressure, rotate to the left side of the right prong.
  - \* To decrease the max fill pressure, rotate to the right side of the right prong.
2. Press down on the adjustment dial. This will engage the adjustment and allow you to move the left or right prong.
3. Keeping the adjustment dial depressed, move the right prong to your desired max fill pressure.

### B. 12 Volt DC Battery Option

The compressor is designed to run off a 12 Volt DC battery. This compressor is equipped with a Low Voltage Protection feature. If the battery voltage is less than 10.5 volts, the compressor will alarm and not start, or it will alarm and shut down.

1. Review your motor vehicle's owner's manual and battery's owner's before connecting the compressor.
2. Keep clear of motor vehicle's fan blades, belts, pulleys, and other parts that may cause injury.
3. Place the compressor on a flat, stable surface near the battery.
4. Clamp the RED positive (+) clamp of the cables first to the positive 12 Volt terminal of the engine battery.
5. Clamp the BLACK negative (-) clamp to an unpainted and unmoving part of the chassis or engine block.
6. Connect your airgun/reservoir cylinder to the fill hose. Pull to ensure it secured and make sure the bleed screw is hand tighten.
7. Press the Start/Stop button once to start the compressor (Fig. 4).

8. Monitor the compressor and airgun/paintball cylinder you are filling. DO NOT leave the compressor and airgun/paintball cylinder being filled unattended.
9. Press the Start/Stop button at anytime to stop the compressor or wait for the compressor to automatically stop at the desired fill pressure.
10. BLEED the fill hose COMPLETELY to avoid hose whip from pressure in the fill hose (Fig. 5).
11. Disconnect the compressor's fill hose from the fill nipple on the airgun/paintball cylinder.
12. Disconnect the Black negative (-) clamp and then the Red positive (+) clamp in that order.
13. Place the compressor in storage after it cools down.

### C. 110 Volt AC Plug in Option

1. Place the compressor on a flat, stable surface near a properly grounded 110 Volt outlet.
2. Plug in the Voltage Converter into a 110 Volt.
3. Connect your airgun/reservoir cylinder to the high pressure air hose. Pull to ensure it secured and make sure the bleed screw is hand tighten.
4. Press the Start/Stop button once to start the compressor (Fig. 4).
5. Monitor the compressor and airgun/reservoir cylinder you are filling. DO NOT leave the compressor and airgun/reservoir cylinder being filled unattended.
6. Press the Start/Stop button at anytime to stop the compressor or wait for the compressor to automatically stop at the desired fill pressure. NEVER fill your airgun/paintball cylinders beyond the maximum fill pressure at room temperature.
7. BLEED the fill hose COMPLETELY to avoid hose whip from pressure in the fill hose (Fig. 5).
8. Disconnect the compressor's fill hose from the fill nipple on the airgun/paintball cylinder.
9. Disconnect the Voltage Converter and place the compressor in storage.

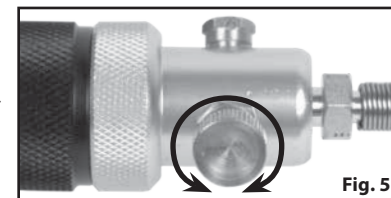


Fig. 5

## 5. MAINTAINING YOUR COMPRESSOR

- Your compressor is equipped with a permanently lubricated maintenance-free motor.
- Before using and/or storing the compressor, inspect its cotton filter in the oil/water separator as follows:
  1. Squeeze the cotton filter dry to remove excessive amount of moisture.
  2. Replace cotton filters if they become deformed or extremely dirty (filters sold separately).
- Never try to lubricate the compressor.
- Use only a dampened cloth to clean exterior of compressor.
- Avoid using any detergent or solvents, which might contain chemical that could damage plastic components and/or painted surfaces of the compressor.
- All other services should be performed by an Authorized Service Personnel.

### SPECIFICATIONS

|                        |  |
|------------------------|--|
| Working Voltage        | Direct Current 12V-15V                           |
| Motor Power            | 350W   |
| Temperature Protection | ≤ 176°F (80°C)                                   |
| Low Voltage Protection | 10.5V  |
| Working Pressure       | Up to 4,500 PSI                                  |
| Application Range      | Airgun/Paintball Cylinders less than .6L (600cc) |

### LIMITED ONE YEAR WARRANTY

For Products Purchased in the U.S.A. and Canada

This product is warranted to be free of defects in materials and workmanship for 1 year. Buyer should retain the original sales receipt as record of date of purchase. This warranty does not cover adaptors, filters, attachments or other accessories. In the event of a defect under this warranty, Crosman will, at its option, repair or replace the product, provided, however, its inspection indicates that an original defect exists. Crosman reserves the right to replace any product which is no longer available with a product of comparable value and function. If Crosman determines the repair is not covered under the warranty guidelines, there could be a charge to you for the repair.

### WHAT IS COVERED

1. Parts and Repair of any factory defect of material or workmanship.
2. Transportation charges to consumer for the repaired product and/or replacement product.

### WHAT IS NOT COVERED

1. Transportation charges to the Authorized Service Personnel for defective product.
2. Normal wear and tear from regular use.
3. Damaged parts as a result from misuse, neglect or tampering.
4. Damage caused by abuse, modification or failure to perform normal maintenance – see Owner's Manual.
5. Improper installation or maintenance performed by someone other than an Authorized service personnel.
6. Any other expense.

THIS LIMITED WARRANTY DOES NOT INCLUDE CONSEQUENTIAL DAMAGES, INCIDENTAL DAMAGES OR INCIDENTAL EXPENSES, INCLUDING DAMAGE TO PROPERTY OR ANY OTHER EXPENSE. CROSMAN DISCLAIMS ANY IMPLIED WARRANTIES, INCLUDING THE IMPLIED WARRANTIES OF MERCHANTABILITY AND FITNESS. SOME STATES DO NOT ALLOW THE EXCLUSION OR LIMITATION OF INCIDENTAL OR CONSEQUENTIAL DAMAGES, OR ALLOW LIMITATIONS ON IMPLIED WARRANTIES SO THE ABOVE LIMITATIONS OR EXCLUSIONS MAY NOT APPLY TO YOU. TO THE EXTENT ANY PROVISION OF THIS WARRANTY IS PROHIBITED BY FEDERAL, STATE OR MUNICIPAL LAW, IT SHALL NOT BE APPLICABLE. THIS WARRANTY GIVES YOU SPECIFIC LEGAL RIGHTS, AND YOU MAY ALSO HAVE OTHER RIGHTS, WHICH VARY FROM STATE TO STATE AND COUNTRY TO COUNTRY.

### STOP – BEFORE YOU RETURN THIS PRODUCT TO THE STORE

Save on gas and avoid the trip back to the store. Contact our Customer Service/Technical Support representatives for information and trouble-shooting help. Call 1-800-7AIRGUN (1-800-724-7486) or find answers to frequently asked questions at www.crosman.com.

### WARRANTY CLAIM AND REPAIR SERVICE

If your compressor needs repair - DO NOT ATTEMPT TO DISASSEMBLE IT! Your compressor requires special tools and fixtures to repair it. Any disassembly or modification not performed by Authorized Service Personnel will void the warranty.

**U.S. Customers** - Contact Crosman Customer Service at 800-724-7486 or e-mail us via www.crosman.com. You will be instructed where and how to send your compressor in for repair under warranty.

Crosman Corporation  
Attn: Warranty Dept.  
7629 Route 5 & 20  
Bloomfield, NY 14469

Include with your product a copy of your receipt and a brief description of the problem. Be sure to indicate your name, mailing address, e-mail address and telephone number. We recommend you use a method of shipping that provides you with a tracking number and insurance options. Crosman is not liable for any damaged, lost or stolen merchandise during shipping.

**Canadian Customers** - Contact the Gravel Agency, in Quebec at 866-662-4869.

Crosman and Benjamin are trademarks of Crosman Corporation.

© 2018 Crosman Corporation

05-18 OM



Fig. 2A

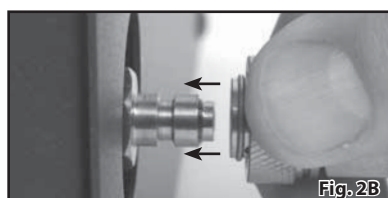


Fig. 2B

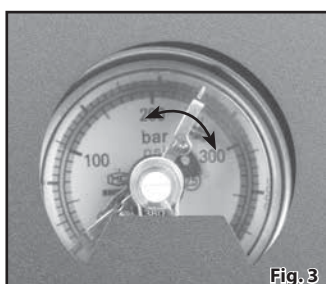


Fig. 3



Fig. 4