



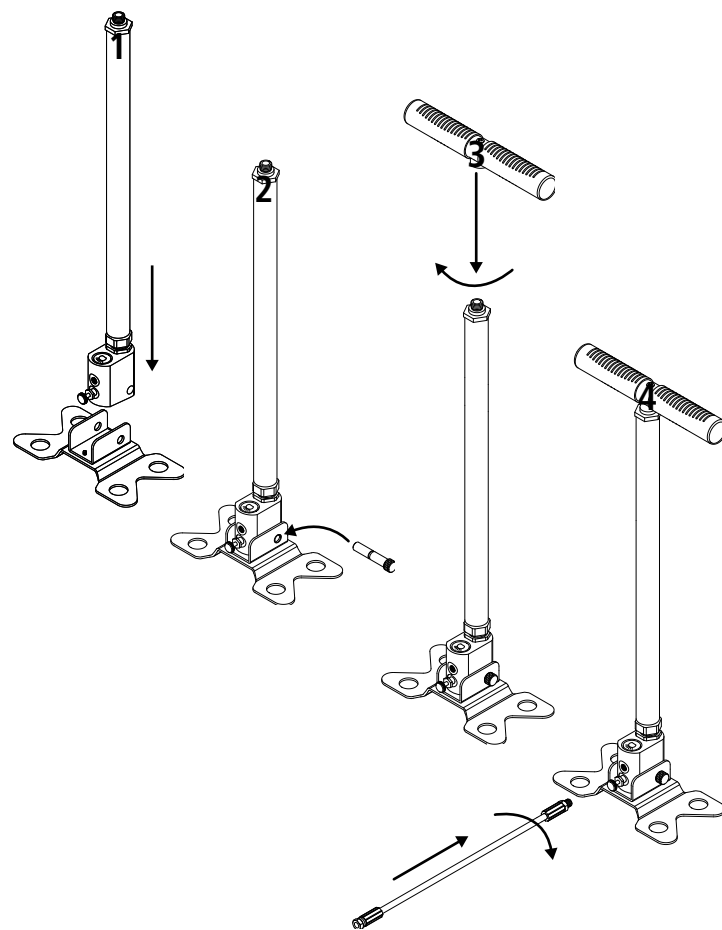
# Air Venturi G4 Hand Pump Instruction Manual

AirVenturi.com  
18370 S. Miles Road  
Warrensville Heights, OH 44128  
216-292-2570 • fax 216-373-0086

## 1-Year Limited Warranty

The Air Venturi G4 hand pump has a one-year limited warranty against manufacturing defects. Failure to properly maintain the pump, abuse or misuse voids the warranty. Repairs done by anyone other than Air Venturi voids the warranty.

## ASSEMBLY STEPS



## Please read this instruction manual carefully before using your hand pump!

Thank you for buying the Air Venturi G4 hand pump. Hand pumps are the most convenient and affordable way to charge your PCP air rifle. There are several features that make it easy to use and lengthen the life of the pump.

- Maximum 230 bar (3,335 psi) fill pressure.
- Ergonomically designed handle with synthetic cover.
- Built-in moisture trap & a built-in particle filter embedded in one side of the handle; the filter traps the moisture and protects your pump & air rifle.
- A compartment in the other side of the handle for spare parts.
- Precise, built-in pressure gauge (manometer) in the frame to protect it from impact.
- Quick-disconnect & tube locking that makes it easier to transport the pump.
- Wide footplate with adjustable pumping angle.
- Includes hose & 1/8 BSPP adapter.

## ASSEMBLY

Assemble your hand pump as shown in "Assembly Steps" picture at left. Don't use tools to tighten the handle. Finger tightness is sufficient.

## USE OF THE PUMP

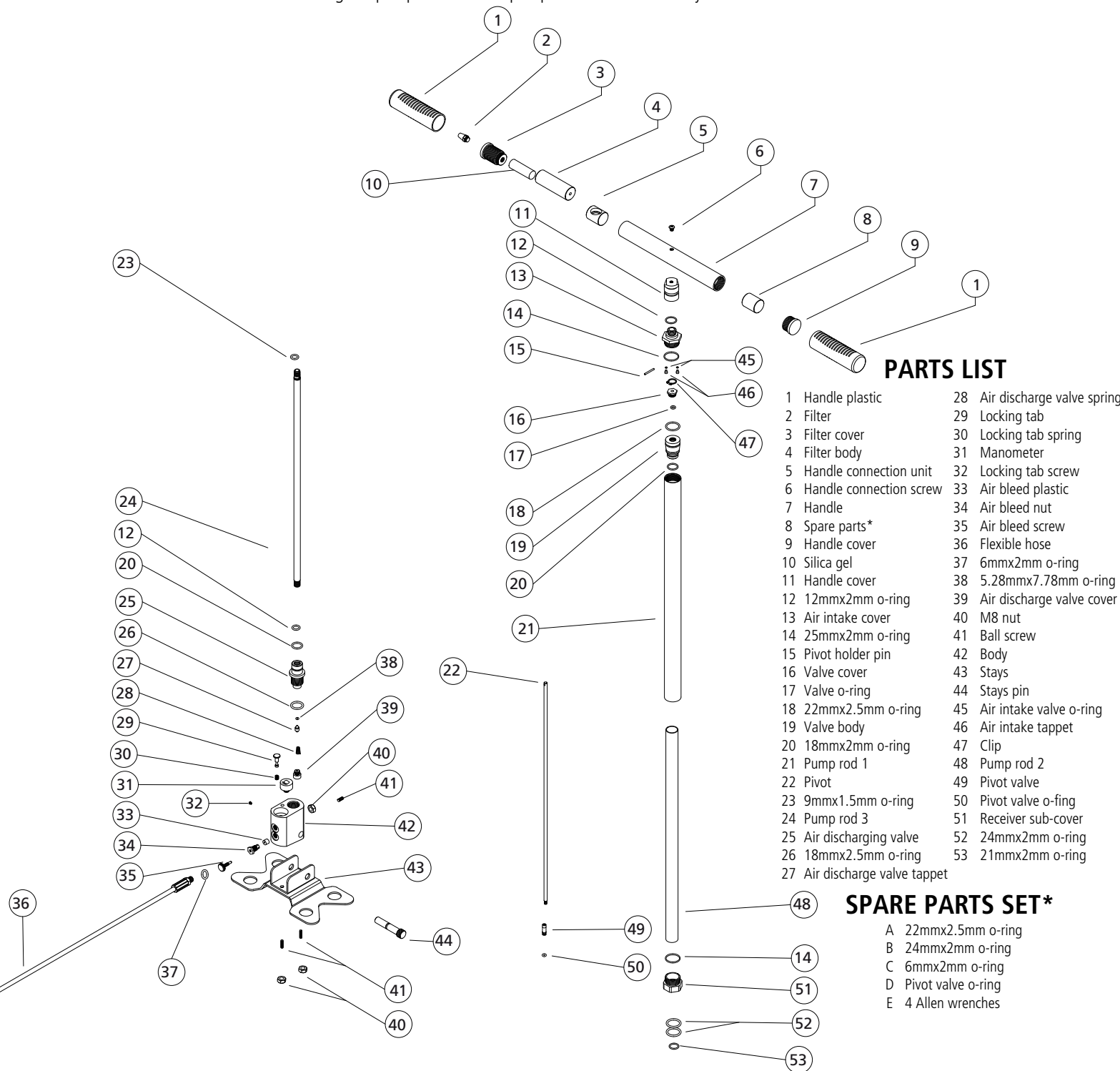
1. Attach the pump adapter to your gun's air fill port. Make sure the moisture bleed valve is tightened.
2. Grab the handle with your hands and place your feet on the pump's footplate.
3. Pump slowly by lifting up and then pressing down the handle. Continue pumping until you reach your desired pressure level in your gun's air reservoir.
4. When you're done pumping, quickly loosen the moisture bleed valve of the pump so the moisture-filled air trapped in the hose is rapidly discharged. Disconnect the hose from your gun's air reservoir.

## WARNINGS & MAINTENANCE

1. Use this pump to fill a PCP air rifle only. Do not use it for other purposes. For best results, use the pump in low humidity.
2. Pump no longer than 5 minutes (approximately 50 pump strokes). Ever 5 minutes, let the pump cool down for 15 minutes. After each pumping session, exhaust the heat and moisture through the pump's air bleed valve. Most PCPs can be filled within 5 minutes. Cooling the pump after every 50 strokes or when the pump rod is very hot will lengthen the life of the pump's seals and o-rings.
3. Pump slowly and deliberately. Stop for 1-2 seconds at the top and bottom of each stroke. The pump fills the air reservoir with each stroke, whether up or down, though it feels hardest on the down stroke—but make the upstroke count, too. Remember to go all the way to the end of each stroke, as most of the work is accomplished in the last inch or so of pump rod travel.
4. Use your body weight when it becomes harder to pump. After 100 bar (1,450 psi), the pumping pressure will steadily increase. Using your body weight gives you more leverage and makes it easier to pump.
5. The pump may become harder to operate after prolonged use. This can be due to lack of lubrication or due to previous lubrication causing the seals and rod to adhere to each other. Regularly cleaning and lubricating your pump will keep it in optimum working condition and lengthen its life. Lightly lubricate the pump rod (Part #48) and then pump it a few strokes. **Use only diver's**

**silicone grease as a lubricant. Any other type of lubricant, oil or grease, (including petroleum-based ones) should never be used.**

6. Quickly exhaust the pump's air bleed valve before you disconnect your PCP gun. Otherwise, the air fill port of your gun's seals and o-rings may be damaged.
7. The recommended maximum pressure of this pump is 230 bar (3,335 psi). However, **do not exceed the manufacturer's recommended maximum fill pressure of your gun's air reservoir.** It may cause a dangerous situation resulting in serious injury to you and others if an air reservoir is filled above the recommended maximum pressure level. Also, never fill any air reservoir that is not in good condition or may be damaged.
8. Always use the pump on firm, non-slip surfaces. Assume the appropriate position and posture for pumping.
9. Do not kink or flatten the hose when using the pump. Never use a pump



## PARTS LIST

1 Handle plastic	28 Air discharge valve spring
2 Filter	29 Locking tab
3 Filter cover	30 Locking tab spring
4 Filter body	31 Manometer
5 Handle connection unit	32 Locking tab screw
6 Handle connection screw	33 Air bleed plastic
7 Handle	34 Air bleed nut
8 Spare parts*	35 Air bleed screw
9 Handle cover	36 Flexible hose
10 Silica gel	37 6mmx2mm o-ring
11 Handle cover	38 5.28mmx7.78mm o-ring
12 12mmx2mm o-ring	39 Air discharge valve cover
13 Air intake cover	40 M8 nut
14 25mmx2mm o-ring	41 Ball screw
15 Pivot holder pin	42 Body
16 Valve cover	43 Stays
17 Valve o-ring	44 Stays pin
18 22mmx2.5mm o-ring	45 Air intake valve o-ring
19 Valve body	46 Air intake tappet
20 18mmx2mm o-ring	47 Clip
21 Pump rod 1	48 Pump rod 2
22 Pivot	49 Pivot valve
23 9mmx1.5mm o-ring	50 Pivot valve o-ring
24 Pump rod 3	51 Receiver sub-cover
25 Air discharging valve	52 24mmx2mm o-ring
26 18mmx2.5mm o-ring	53 21mmx2mm o-ring
27 Air discharge valve tappet	

## SPARE PARTS SET\*

- A 22mmx2.5mm o-ring
- B 24mmx2mm o-ring
- C 6mmx2mm o-ring
- D Pivot valve o-ring
- E 4 Allen wrenches