

**THE  
WEBLEY  
TEMPEST  
AIR PISTOL  
OWNER'S  
MANUAL**



## Specification

The Tempest is a spring-operated, single shot, break action air pistol fitted with a precision-rifled barrel primarily suited to waisted lead pellets. The gun is available in either .177 (4.5 mm) or .22 (5.5 mm) calibre. As with all rifled barrels, darts may be used but some deterioration of the rifling will occur.

The gun incorporated many additional design features which include:

1. An adjustable trigger.
2. A manual safety catch (i.e. selective use).
3. A rearsight with vertical and horizontal adjustment.
4. Stockslides designed to fit the hand, with a thumb rest and chequered grips.
5. Positively locked barrel using the famous Webley revolver type stirrup.

<b>WEIGHT</b>	32ozs	0.9 kg
<b>OVERALL LENGTH</b>	9.12 ins	232 mm
<b>OVERALL LENGTH OF BARREL</b>	6.87 ins	175 mm

## General instructions

Tempest air pistols are supplied fully assembled, packed in specially designed protective boxes, and are ready for immediate use once familiarisation of the pistol and an appreciation of the basic safety rules have been completed.

## The basic safety rules

1. Treat every pistol as if it is loaded.
2. Never point a pistol at anyone, or allow anyone to point a pistol at you even if you think it is not loaded.
3. Always carry the pistol so that the direction of the muzzle is under control, even if you stumble.

4. Always be sure of your target and what lies behind it, before you squeeze the trigger.
5. Never leave a loaded pistol unattended.
6. Beware of targets which tend to cause ricochets.

Keeping to these rules will ensure safe and enjoyable sport with your new air pistol.

### Operating instructions

The pistol is fitted with a manual safety mechanism designed so that it is operative only when the gun is cocked. Prior to cocking, therefore, the safe will be in the “off” position, i.e. with the lever forwards toward the muzzle end.



To cock the pistol hold it firmly by the grip in the right hand then with the right thumb depress the barrel as illustrated at A. Lift the barrel catch with the left hand to take up the free movement then turn the hand over so that the back of the hand is towards the body. Grip the barrel firmly then rotate it until the sear is heard and felt to engage. Keep the finger of the right hand clear of the trigger whilst cocking the pistol.

It may be easier to cock the pistol with the left thumb resting on the barrel (illustration B).



**NB Never allow the barrel to spring back before the sear is engaged, nor pull the trigger until the barrel is returned and secured in its firing position.**

**If required, apply the safety catch by rotating the safety lever points uppermost as illustrated at C.**

### **To load**

**Insert a pellet into the breech end of the barrel until flush with the end – do not leave the skirt of the pellet protruding otherwise the joint washer (H.9) will quickly be worn out. Close the barrel and squeeze down until the stirrup clicks into engagement and is seen to overlap the end of the barrel.**

**Point the gun towards the target and take a comfortable stance for firing. If the safety catch is on, to disengage it turn the lever anti-clockwise until it lies roughly in line with the thumb rest (see illustration A). Squeeze the trigger when ready to fire.**



## Routine care

1. Do not fire the pistol without a pellet in the barrel. The only time you have to do this is when adjusting the trigger pull.
2. Do not leave the pistol loaded or cocked when not in use. Leaving it cocked will reduce the life of the mainspring.
3. After use, wipe the metal parts with an oily cloth to prevent corrosion, using Webley gun oil.
4. Occasionally apply three or four drops of Webley gun oil to:
  - a) Barrel fulcrum pin (H.26)
  - b) Barrel catch fulcrum pin (H.18)
  - c) Safe shaft (H.55)
  - d) Sear and trigger fulcrums (H.51) Access is through the trigger slot.
  - e) Barrel catch plunger (H.15)
  - f) Link fulcrums (H.39), at three points.
  - g) Piston skirt (H.22), via slot in the body.
  - h) Piston washer (H.23), via hole in the joint washer.

## Trigger adjustment

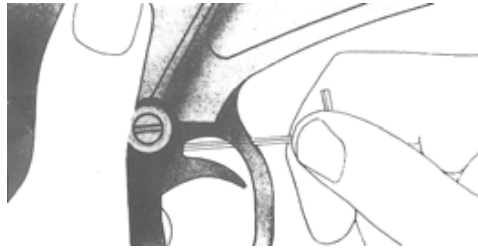
Trigger pull adjustment can be achieved by varying the tension on the trigger return spring (H.16). The range of adjustment is approximately 3 to 5 lbs (1.36 to 2.27kg).

Cock the pistol, close and secure the barrel WITHOUT LOADING, then check that the safety catch is in the OFF position.

The adjusting screw (H.47) is located in the underside of the trigger (H.46)

Access is gained through the hole in the underside of the trigger guard (H.50), when the gun is cocked. Using the key provided, turn clockwise to increase the trigger pull and anti-clockwise to lighten the trigger pull. Do not attempt to lighten the trigger pull to a point where the spring tension on the screw is lost, otherwise the

screw may work loose. Conversely, do not overtighten, causing the spring to become fully compressed. The nominal adjustment range of the screw is .1" (2.54 mm). At the lightest setting the screw stands inside the trigger by approx .08" (2 mm). When checking the trigger pull, remember to point the gun towards the ground even though it isn't loaded.



### **Adjusting the rearsight (zeroing)**

Fire six pellets as accurately as you can in the manner and at the range you normally intend to shoot at a suitable fixed target. Always aim at the bull regardless of where the hits occur. Then examine the target and according to where the pellets have grouped, adjust the rearsight accordingly. Repeat if necessary.

The rearsight is capable of independent vertical and horizontal adjustment.

### **Vertical adjustment**

To correct a gun shooting high, slacken the upper rearsight fixing screw (H.125) and lower the rearsight leaf (H.123). To correct a gun shooting low, raise the leaf.

### **Horizontal adjustment**

To correct a gun shooting to the right, slacken the lower rearsight fixing screw (H.125) and move the rearsight base (H.122) to the left. To correct a gun shooting to the left, move the rearsight base to the right. The correct tightening torque for the fixing screw is 1 lb.ft. (0.138kg.m)

## Servicing instructions

(for a qualified repairer)

### Major overhaul or repair

The pistol need only be completely dismantled when it is necessary to remove the piston assembly. To replace a mainspring it is not necessary to completely dismantle the gun, and section 4a covers the procedure. It will normally become necessary to change the mainspring only after the pistol has been fired many thousands of times, indicated by a gradual loss of pellet velocity.

### To dismantle

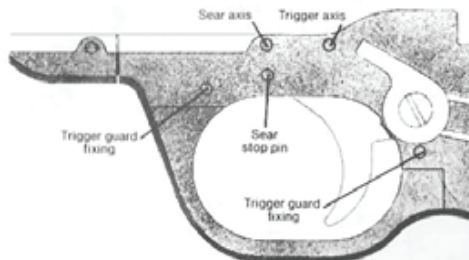
**FIRST ENSURE THAT THE PISTOL IS NOT COCKED, then dismantle in the following sequence.**

**1. Stockside**

Unscrew and remove one of the stockside fixing screws (H.65). The right and left-hand stockside can be then removed, one of them complete with its screw and stockside nut (H.64).

**2. The sear trigger mechanism**

Five of the long roll pins (H.51) retaining the guard, sear and trigger mechanism can be removed with an .089" (2.25 mm) diameter drift.



**Remove the pins and dismantle the components in the following order.**

- a) Tap out the two pins retaining the trigger guard (H.50) then pull off the guard.
- b) Remove the sear spring (H.49)
- c) Tap out the trigger axis pin and remove the trigger complete with its adjusting screw (H.47) and spring (H.16)
- d) Tap out the sear stop pin.
- e) Tap out the sear axis pin and take out the sear.

3. The safety mechanism

Unscrew the safe lever fixing screw (H.58), then prise off the safe lever (H.57), keeping it square with the safe shaft. If this proves difficult, obtain a 4BA bolt, a minimum of 1 $\frac{3}{4}$ " (30 mm) long, screw it into the end of the safe shaft as far as it will go, then tap the head of the bolt, forcing the shaft out towards the opposite side. Lift off the safe spring (H.56).

4a The mainspring and piston

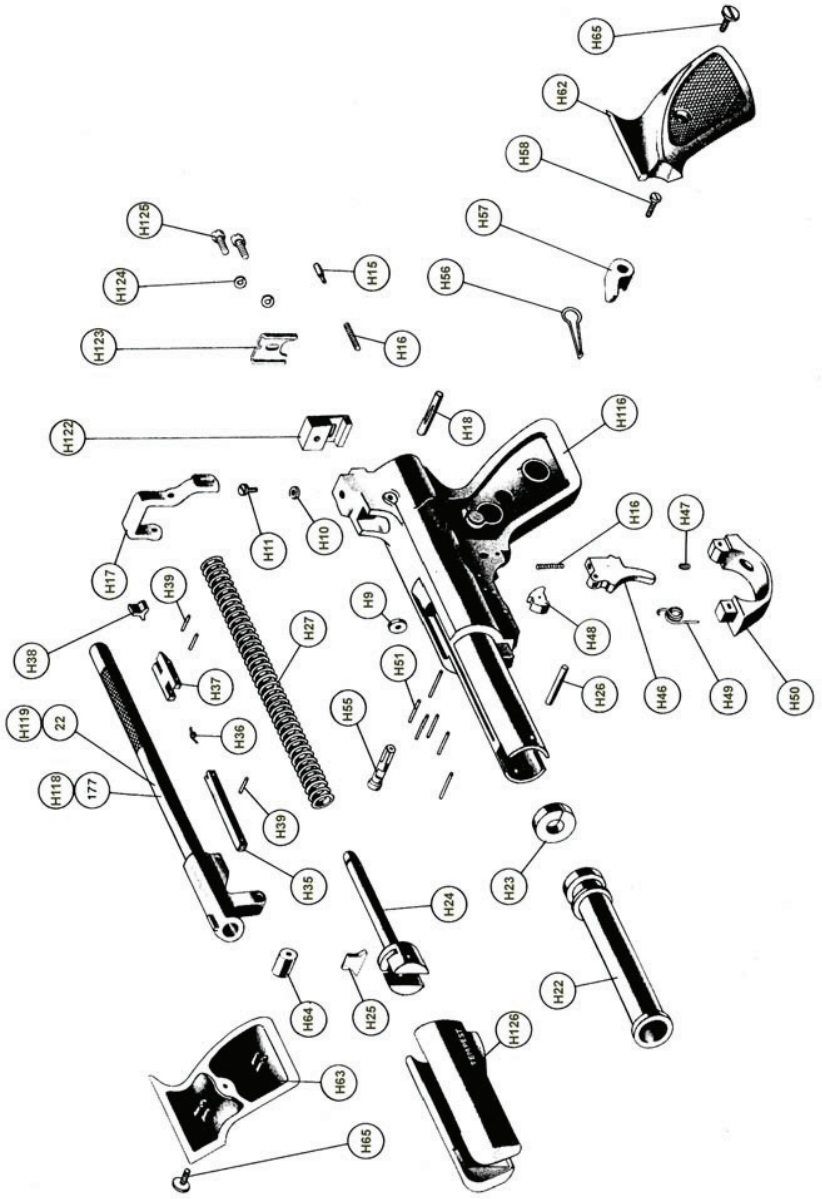
Using a small drift, ideally .089" (2.25 mm) in diameter, tap out the remaining long roll pin (H.51) then pull off the forend (H.126) which is a spring fit over the body. Disengage the barrel catch (H.17) and partially tap out the barrel and link assembly (H.120 or H.121) can be withdrawn. Having lifted the barrel away from the slot in the spring guide (H.24) slide the link mechanism towards the rear of the gun until the small link (H.38) can be withdrawn through the large hole in the body at the end of the link slot.

Press the end of the spring guide against the corner of a workbench, supporting the rear of the gun against the stomach, then tap out the barrel fulcrum pin the rest of the way, ease the pressure off the gun, and allow the spring guide to emerge under the influence of the mainspring.

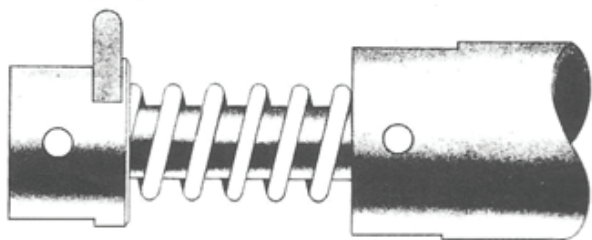


<b>PART No.</b>	<b>DESCRIPTION</b>	<b>No.OFF</b>
H9	JOINT WASHER	1
H10	PASSAGE SCREW JOINT	1
H11	PASSAGE SCREW	1
H15	BARREL CATCH PLUNGER	1
H16	SPRING -TRIGGER & BRL CATCH	2
H17	BARREL CATCH	1
H18	BARREL CATCH FULCRUM PIN	1
H22	PISTON	1
H23	PISTON WASHER	1
H24	SPRING GUIDE	1
H25	LINK FULCRUM	1
H26	BARREL FULCRUM PIN	1
H27	MAINSRING	1
H35	LONG LINK	1
H36	LINK SPRING	1
H37	INTERMEDIATE LINK	1
H38	SMALL LINK	1
H39	FULCRUM PIN SHORT	3
H46	TRIGGER - PRECISION CAST	1
H47	TRIGGER ADJUSTING SCREW	1
H48	SEAR	1
H49	SEAR SPRING	1
H50	TRIGGER GUARD	1
H51	FULCRUM PIN LONG	6
H55	SAFE SHAFT	1
H56	SAFE SPRING	1
H57	SAFE LEVER	1

WEBLEY TEMPEST SPARE PARTS LIST



<b>PART No.</b>	<b>DESCRIPTION</b>	<b>No.OFF</b>
H62	STOCKSIDE L.H	1
H63	STOCKSIDE R.H	1
H64	STOCKSIDE NUT	1
H65	STOCKSIDE FIXING SCREW	2
H116	BODY (NOT SUPPLIED AS A SPARE PART	1
H118	.177 BARREL & HOUSING ASSY	1
H119	.22 BARREL & HOUSING ASSY	1
H120	.177 BARREL & LINKS ASSY	1
H121	.22 BARREL & LINKS ASSY	1
H122	REARSIGHT BASE	1
H123	REARSIGHT LEAF	1
H124	REARSIGHT FIXING SCREW WASHER	2
H125	REARSIGHT FIXING SCREW	2
H126	FOREND	1



Remove the spring guide and mainspring, taking care not to lose the link fulcrum (H.25).

- 4b. If it is necessary to remove the piston (H.22) insert a small screwdriver through the slot on the top of the body, engage the shouldered end of the piston and gently tap out towards the open end of the body. It will be necessary to change the position of the screwdriver when the end of the slot in the body tube is reached. Reinsert the screwdriver into the sear groove of the piston and continue tapping out until the piston can be withdrawn. If the piston washer needs replacing, carefully prise the old one off, taking care not to damage the head of the piston (Note: the piston seal is split in the same way as a conventional piston ring, to aid assembly).
5. The barrel and link assembly  
Using a small drift, ideally .089" (2.25 mm) in diameter, tap out the short roll pins (H.39). Do not lose the link spring (H.36) located between the long link (H.35) and the intermediate link (H.37).
6. The barrel catch assembly  
To remove the barrel catch (H.17), tap out the barrel catch fulcrum pin (H.18), using an 1/2" (3 mm) diameter drift. The barrel catch plunger (H.15) and its spring (H.16) can now be removed.

7. **The joint washer**

Insert a small screwdriver down the hole in the joint washer (H.9), tilt the screwdriver slightly and feel for the bottom of the recess, then prise the joint washer out.

## **Reassembly**

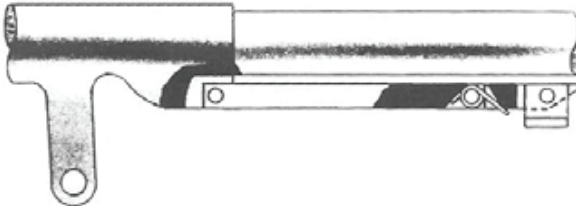
To avoid difficulties in correctly positioning components, reassemble in the reverse order of dismantling. During reassembly the following points should be adhered to, in order to achieve satisfactory performance.

1. **The joint washer**

When fitting a new joint washer, always make sure the radius end is facing outwards - against the end of the barrel - and that it is pushed right home into its recess.

2. **The barrel and link assembly**

When assembling the link mechanism, make sure that the long link, the intermediate link and the link spring are correctly positioned relative to each other.



3. **The mainspring**

When reassembling the mainspring, use the corner of a workbench located in the slot in the spring guide to provide stability when compressing the mainspring. First, however, position the link fulcrum in its slot in the spring guide and arrange this to be inline when steering it into the end of the body slot. Push the body of the gun over the spring guide until the barrel fulcrum pin part way. Having slid the small link into the slot of the body, position the lug of the barrel in the slot of

the spring guide, then push the barrel fulcrum pin right home. Equalise the projection of the pin each side before assembling the forend.

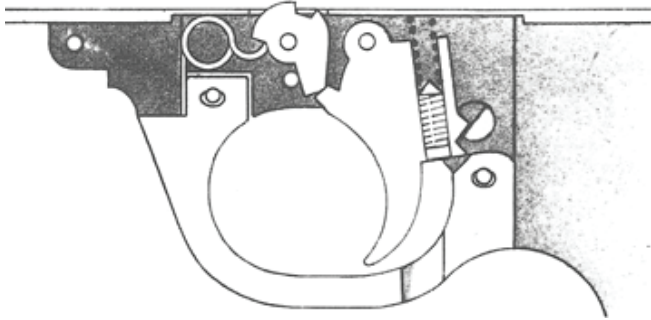
4. **The safety mechanism**

It is easier to assemble the safety mechanism before assembling the trigger mechanism. When assembling the safe shaft and lever, it is important to get their relationship correct. To do this, hold the gun in a vice with the barrel horizontal, then push the safety shaft into position with its central flat uppermost. Next, position the safety spring with its legs across the nearest pair of flats of the square on the safety shaft. Push the lever to engage the square on the shaft with the handle of the lever pointing about 5° clockwise of perpendicular. When the lever is home, its boss face is just clear of the safe spring.

After assembling the safety lever fixing screw, turn the safety lever anticlockwise to the fire position before assembling the trigger mechanism.

5. **The trigger mechanism**

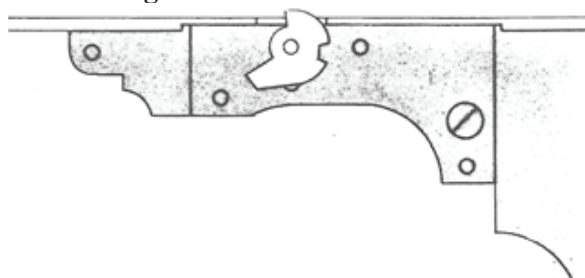
The accompanying illustration shows the parts correctly fitted before the gun is cocked.



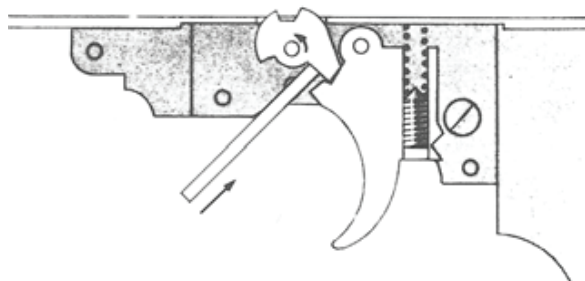
Reassemble in the following order

- a) Drop the sear into its slot the correct way round and pick up its location with a slave peg .089" (2.25 mm) in diameter. Tap the roll pin through, flush with the side of the body, letting the slave peg be driven out against finger pressure, then

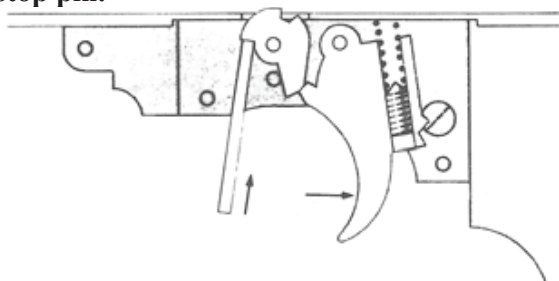
rotate the long leg of the sear towards the muzzle end of the gun.



- b) Insert the trigger complete with its spring and adjusting screw. Using the slave peg, locate and fit the trigger in the same manner as the sear, then insert the slave peg into the slot of the sear and trigger housing and push the sear into 'bent', as illustrated below.



- c) Drive in the sear stop pin.  
d) Pull the trigger and hold it back, then push the small leg of the sear until the long leg rests against the stop pin.



- e) Position the sear spring, then fit the trigger guard.  
f) Adjust the trigger pull if necessary.



## WARRANTY REGISTRATION CARD

All Webley airguns are manufactured to the highest possible standards, using the finest materials, to give faultless service. In the unlikely event of there being a defect in material or workmanship, at anytime, within the twelve months of the date of registration. Webley undertake to repair or replace the shotgun (at Webley's discretion). Warranty is only valid for the original purchaser of the airgun and cannot be transferred to subsequent owners.

**Please note:** The warranty will be invalidated if:

- The airgun has been disassembled and incorrectly assembled.
- The airgun is found to have lubrication not recommended by Webley.
- The airgun has been fitted with non-standard parts.
- The airgun has been misused or abused.
- The warranty card is not returned within 28 days of purchase.

**Please note:** The warranty does NOT cover:

- O-rings, screws, seals, springs and stocks.
- Any damage or faults caused by owner misuse or accidental damage.
- Carriage costs of the airgun to and from the service centre.

The warranty is in addition to your statutory rights in the country of purchase. To register for the Warranty scheme the warranty card must be completed and returned to Webley within 28 days of purchase. Please retain your sales receipt as proof of purchase.

Please fill in the correct details and post the card back to:

Gunsmithing Ltd.  
3 Lacey Place  
Southport, CT 06890  
gunsmithltd@sbcglobal.net  
203-254-0436



**If you have any problems with your Webley Tempest air pistol in the first 12 months from original purchase you should contact the dealer from where it was purchased.**

**If the pistol is out side the warranty period you can contact  
gunsmithltd@sbcglobal.net**

**Notes**

**Serial Number:**.....

**Date of purchase:**...../...../.....

**Model:** WEBLEY TEMPEST

**Calibre:**.....

**Where**

**purchased:**.....

.....







Distributed in the U.S.A. by:  
Webley & Scott, U.S.A.  
4750 Longley Lane, Ste. 207  
Reno, NV 89502  
Phone: 775-825-9835  
[www.webleyandscott.com](http://www.webleyandscott.com)