

DIRECTIONS FOR USE

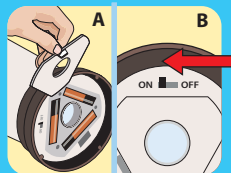
It is a violation of Federal law to use this product in a manner inconsistent with its labeling.

Allow 10 to 30 minutes, depending upon the size of the area, for product to take effect. This product works well in outdoor areas where there is minimal air movement, such as decks, unenclosed porches, patios and yards. Product may be used for outdoor camping. Use one lantern per each 225 square feet (an area 15' x 15') or 15' in diameter. Lantern provides light and repels mosquitoes, black flies, flying insects and bugs. Batteries power the light; heat from the ThermoCELL cartridge activates the repellent mat and provides mosquito repellency for up to four hours.

Use Restrictions: Only for outdoor use as an insect repellent. Do not use indoors, in tents or in any enclosed area. Do not insert anything other than ThermoCELL® mats into the lantern. Cover or remove all exposed food. Do not leave lantern unattended or use in windy conditions. Do not expose lanterns or mats to rain. Place lantern on a flat, stable surface with the grill facing upward. Clean with a damp cloth only when the lantern is cool and inactive. Butane cartridges other than ThermoCELL® cartridges will not work in this lantern.

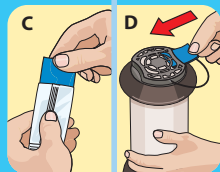
To Use the Light:

1. Remove battery cover on the bottom of the lantern. Install 3 AAA-size batteries (not included) (A). Replace battery cover. The batteries power 3 LED lights and will provide lantern light for a maximum of 50 hours.
2. To turn lantern light on, push the black switch on the bottom of the lantern to the "ON" position (B). If lantern light does not turn on, replace batteries. When finished using the light, push the switch to the "OFF" position.



To Use the Mosquito Repellent:

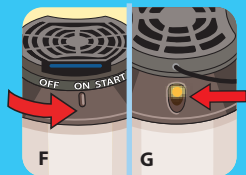
1. Remove one ThermoCELL® Mosquito Repellent mat from wrapper (C). Mats last a maximum of 4 hours. Mat turns from pale blue to white when repellent has been exhausted.
2. Insert the mat under the grill at the top of the lantern (D).
3. Remove the butane cartridge cap and screw the cartridge into the opening on the bottom of the lantern by turning the cartridge clockwise until it stops (E). Make sure the cartridge is fully inserted.
4. To activate the mosquito repellent, grasp the lantern collar and rotate collar to the right until the indicator line points to "ON" (F). The gas will begin to flow.



5. Wait approximately 5 to 10 seconds then rotate lantern collar further to the right until the indicator line points to "START". You should hear a clicking noise.



6. To verify that the mosquito repellent is activated look at the oval view hole located on the lantern collar to the right of the "START" button. An orange light will glow (G). If there is no orange light, rotate indicator line back to the "ON" position and repeat rotation to the "START" position two to three times in rapid succession.



7. If there is still no orange light visible in the view hole, make sure the cartridge is completely screwed into place. Also check the amount of fuel in the cartridge. If cartridge is empty or near empty, remove cartridge and replace with a new ThermoCELL® cartridge. Then repeat steps 4 - 6.

8. Do not touch the grill; it will be hot after a few minutes. Some visible vapor will appear during use. This is normal. When finished using the lantern, rotate the lantern collar to the left until the line points to "OFF". Allow lantern to cool completely before storing.

9. To replace a used mat, make sure line is in the "OFF" position and allow lantern grill to cool. Push the used mat out by inserting a fresh mat (H).

