

# WEBLEY PRECISION AIRGUNS

## WEBLEY NEMESIS X<sup>TM</sup> PCP AIR RIFLE



# NEMESIS X<sup>TM</sup> PCP RIFLE USER MANUAL

**WARNING:** Not a toy. Adult supervision required. Misuse or careless use may cause serious injury or death. Always wear eye protection when using this airgun. This airgun is intended for use by those 18 years of age or older. May be dangerous up to 686m/750yds. **READ ALL INSTRUCTIONS BEFORE USING.**

**WARNING:** Do not brandish or display this airgun in public; it may confuse people and may be a crime. Police and others may think it is a firearm. Do not change the coloration or markings to make it look more like a firearm - that is dangerous and may be a crime. **IMPORTANT:** adult supervision required. Must be 18 years of age or older to purchase. Buyer and user have the duty to obey all laws regarding the use and ownership of this airgun.



[www.webley.co.uk](http://www.webley.co.uk)  
[sales@webley.co.uk](mailto:sales@webley.co.uk)



## THE BASIC SAFETY RULES

1. Treat every rifle as if it is loaded.
2. Never point a rifle at anyone, or allow anyone to point a rifle at you even if you think it is not loaded.
3. Always carry the rifle so that the direction of the muzzle is under control, even if you stumble.
4. Always be sure of your target and what lies behind it, before you squeeze the trigger.
5. Never leave a loaded rifle unattended.
6. Beware of targets which tend to cause ricochets.

Keeping to these rules will ensure safe and enjoyable sport with your new air rifle.

## THE LAW

**KNOW THE LAW ON AIRGUNS AND OBEY IT.**

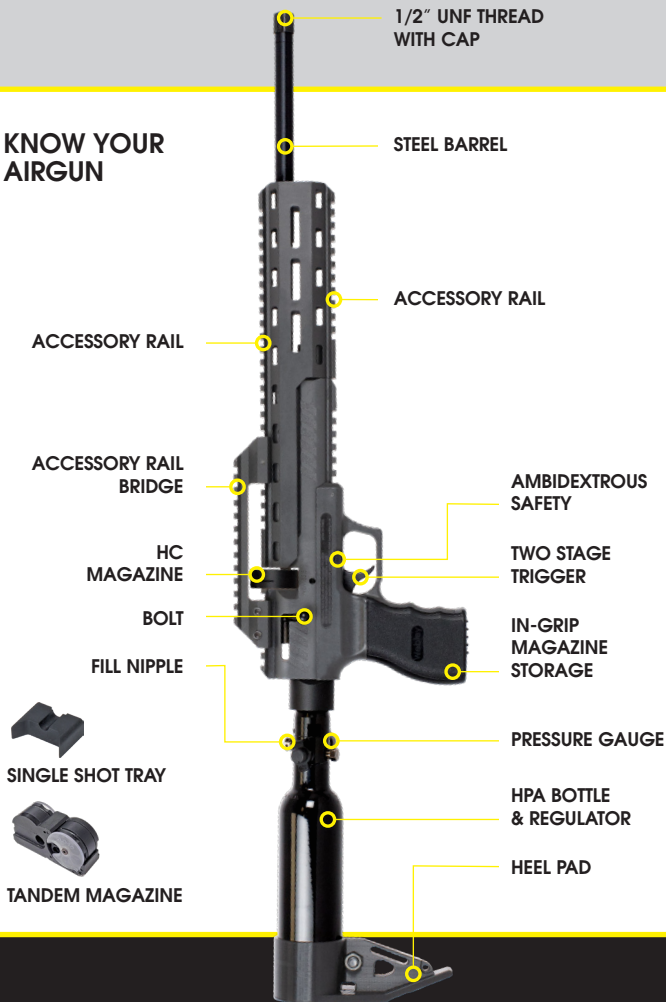
**ACT RESPONSIBLY, ACT SAFELY AND ENJOY YOUR SHOOTING!**

## USE THE CORRECT PELLETS

Always use the appropriate quality .177 & .22 airgun pellets.  
Never use any damaged, tarnished or previously used pellets



## KNOW YOUR AIRGUN

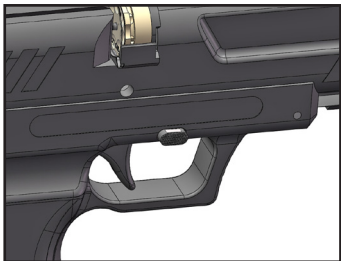


## LOADING INSTRUCTIONS

When handling the air rifle the safety catch should always be in the safe position with the white bar visible.

Do not attempt to pull the trigger whilst the safety catch is in the safe position, excessive force will damage the mechanism.

To fire the gun, push safety toward the left the red bar is now visible. The trigger can now be operated.

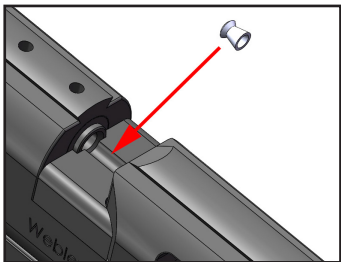


### Single Shot Tray

Pull the bolt to its rear position, slide in the Single Shot Tray to the position shown.

Place the pellet into the trough in the Single Shot Tray, dome or flat head forward.

Push the bolt forward and lock in position.

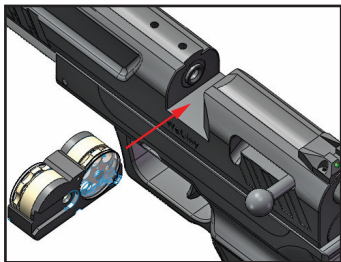
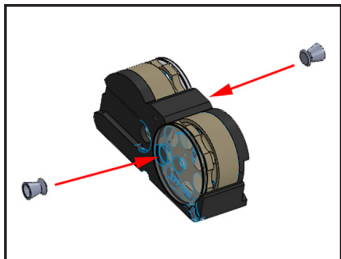


## LOADING INSTRUCTIONS

### Tandem Magazine

Push pellet nose first into the transparent faceplate on either side of the Magazine, rotate the central cylinder anti-clockwise to the next empty chamber, push in the next pellet. Repeat for the amount of shots required. Repeat on the reverse side of the Magazine.

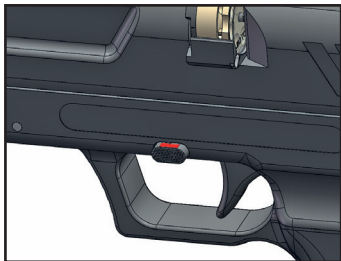
Remove the Single Shot Tray, Push the Tandem Magazine from the left of the gun until it clicks.



## LOADING INSTRUCTIONS

### Tandem Magazine (con't)

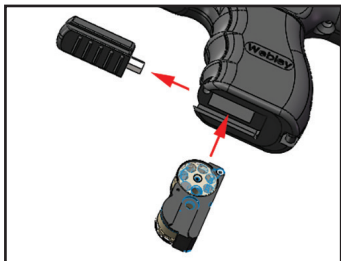
Push the bolt fully forward.  
When ready to fire, press the  
Safety Catch fully to left until  
the red fire indicator is visible.  
Squeeze the trigger to take  
your shot.



The Tandem Magazine or  
Single Shot Tray is kept in the  
Magazine storage when not  
in use.

Grip cap Allen key cap can  
be used to tighten heel pad.

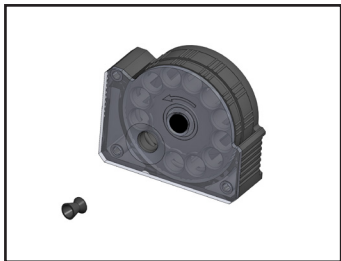
Do not over tighten.



## LOADING INSTRUCTIONS

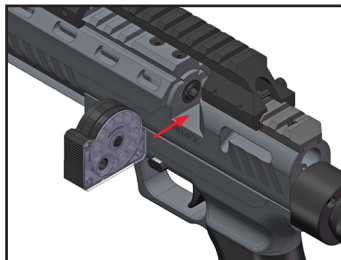
### HC Magazine

Push pellet nose first into the front transparent faceplate of the magazine, rotate the central cylinder anti-clockwise to the next empty chamber, push in the next pellet. Repeat for the number of shots required.



Remove the Single Shot Tray, Push the HC magazine from the left of the gun until it clicks.

Push the bolt fully forward. When ready to fire, press the Safety Catch fully to left until the red fire indicator is visible. Squeeze the trigger to take your shot.



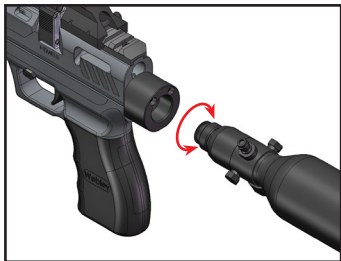
## LOADING INSTRUCTIONS

### Attaching and detaching High Pressure Air (HPA) Bottle.

The HPA bottle can be filled either fitted to the gun or not fitted to the gun. Insert the threaded end into the back of the gun.

Slowly turn clockwise until it comes to a stop. Then give a final 1/4 turn. To detach the HPA bottle turn anti-clockwise until free.

Note. A small amount of air will be lost attaching and detaching the HPA bottle.



## LOADING INSTRUCTIONS

### Filling High Pressure Air (HPA) bottle.

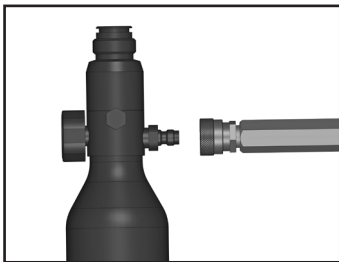
The HPA bottle can be filled either fitted to the gun or not. Remove cap from fill nipple on bottle. Attach the snap on connector to the fill nipple. Slowly fill the HPA bottle to 200 bar. Do not overfill.

Bleed air from the connecting hose. Not bleeding the charging hose before disconnecting the snap on connector may result in injury from the hose whipping due to high pressure air in the hose.

Disconnect the snap on connector from the HPA bottle and replace the protective cover to prevent dirt entering the valve.

Note. Only use dry, filtered breathing grade air, do not use any other gas as this will cause malfunction, injury or even death.

The HPA bottle can be filled using divers tank, hand pump or electrical compressor designed for use with pre-charged pneumatic air guns.



## SWAPPING THE BOLT INSTRUCTIONS

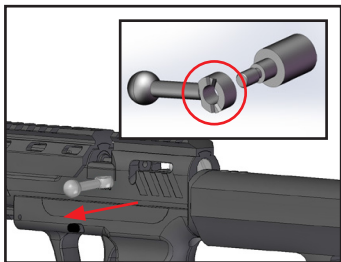
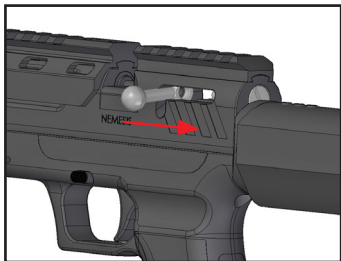
Ensure rifle is unloaded. Remove HPA bottle and bottle adaptor by unscrewing the two rear screws and the screw at the rear of the grip.

Using a small flathead screwdriver, unscrew the Retaining Bolt accessed via the rear of the Rifle.

Keeping the rifle horizontal, use the screwdriver to push the Retaining Bolt rearwards once it is undone.

Rotate the Bolt Handle 90 degrees and remove from the body of the Rifle. Insert the Bolt Handle in the desired side of the Rifle and screw in the Retaining Bolt hand tight.

When swapping the bolt, the slot side must face the muzzle, shown right, refit bottle adaptor ensuring air feed pipe and spring are correctly aligned.



For maximum accuracy,  
performance and penetration,

We recommend using  
genuine Webley pellets.



Available in all good gun shops.  
Ask your local Dealer.

# WEBLEY PRECISION AIRGUNS

WEBLEY  
**NEMESIS X<sup>TM</sup>**  
PCP AIR RIFLE



## BRITISH ENGINEERING SINCE 1790.

Webley started producing airguns in Birmingham, England in 1924. Today, we produce airguns to the same design principles as then – quality, precision and affordability. When you purchase a Webley airgun, you will own a piece of history with a pedigree that is famous worldwide.



[www.webley.co.uk](http://www.webley.co.uk)  
[sales@webley.co.uk](mailto:sales@webley.co.uk)