

THE LOGUN *Axsor*
THE LOGUN GEMINI

INSTRUCTION MANUAL

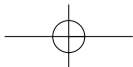
THE LOGUN *Axsor*

THE LOGUN GEMINI

Universe House,
Key Industrial Park,
Playshay Road,
Wiltshire,
West Midlands,
WV13 3YA
England

TEL: 01902 722 144
Fax: 01902 722 480
Service Line 01902 738 070
E-mail: logun@airgasupport.com
www.logun.com
www.airgasupport.com
www.theairgas.co.uk

Sole Distributor -
Airgasupport Ltd





Rifle shown with optional Deluxe Stock - telescopes shown are optional Extras

LOGUN GEM1-

LOGUN *Axssor*

LOGUN

LOGUN

CONTENTS

| | |
|--|-----------|
| Rules of Safe Shooting | 3 |
| Getting Started | 4 |
| Loading the Logun Axsor | 6 |
| Loading the Logun Gemini | 7 |
| Safety | 8 |
| Looking After Your Axsor / Gemini | 9 |
| Stock Maintenance | 11 |
| Adjusting the Trigger | 12 |
| Do's and Don'ts / Problems | 14 |
| Service Record | 16 |

DO follow the rules of safe shooting on page 3 of this manual.

DON'T overcharge the rifle, this will result in a loss of power and could damage the internal seals.

DO bleed off excess air from the filling hose prior to pulling the probe out.

PROBLEMS

In the unlikely event of your Logun Axsor/Gemini showing signs of malfunctioning or of reduced performance, **DO NOT** attempt to rectify the problem yourself. Please call the Logun Service Line where they will either talk you through any simple rectification or arrange for the rifle to be returned to the Service Centre for repair.

Logun Service Line - 01902 722 144

LOGUN

Do's and Don'ts

DO clean your rifle with either a silicon or synthetic based spray - apply spray to lint free cloth then wipe over rifle.

DON'T spray silicon or synthetic based spray directly onto the rifle as this could cause problems with the greases within the breech system.

DO remove the stock from the action before drilling the stock to fit sling swivels.

DON'T leave the filling chamber exposed, always replace the dust plug.

DO use a silicon or synthetic grease on the filling probe, this will increase the life of the O-ring seals situated on the probe body.

DON'T rely on the safety catch to provide guaranteed safety.

LOGUN

Rules of Safe Shooting

- *Never point a gun (even a BB gun) at a person.
- *Always wear shooting/safety glasses and ensure all those with you wear them too.
- *Never point a gun at anything other than your target.
- *Always keep your gun on "safety" until you are ready to shoot in a safe direction.
- *Never load your gun until you are ready to shoot.
- *Always place your backstop in a location that will be safe should the backstop fail.
- *Never shoot at a hard surface, water or anything that could cause a ricochet.
- *Always check to see if a gun is on "safety" and unloaded when receiving it from another person or from storage.
- *Never put a gun away loaded.
- *Always be sure of your target and be certain your target has a safe backstop.
- *Never re-use ammunition.
- *Always ensure you use the correct calibre ammunition.
- *Never rely solely on the safety catch to ensure safety.
- *Always treat your gun as if it were loaded and with the appropriate level of respect a loaded firearm demands.
- *Always read and follow the manufacturers manual and instructions.
- *Always make sure you understand how the gun works prior to using it.
- *Always keep your finger off the trigger and outside the trigger guard until you are ready to shoot.
- *Always keep your gun in a safe place, ensuring no unauthorised person can use it.
- *Always abide by national and local firearms regulations and laws.

Shooting is probably the safest sport in the world but remember that misuse and careless use of guns can cause serious injury or death.
Ask, listen, think - if in doubt - don't!

LOGUN

LOGUN

Getting Started



Please note: Your Logun Axsor/Gemini requires the fitting of a telescopic sight or similar sighting device before use. Always ensure that the mounts used are sufficiently high enough to lift the objective bell of the scope clear of the rifle's barrel and action block and the body of the scope clear of the rotary magazine allowing for easy insertion and removal.

CHARGING THE RIFLE

- 1) Fit the supplied probe charging connector to the air hose of your charging equipment.
- 2) Remove the brass plug from the rifle filler hole - this is situated beneath the receiver at the muzzle end of the rifle. Put the plug in a safe place as it is vital in keeping grit and dirt from getting into the rifle and contaminating the internal valve system.

ADJUSTING THE TRIGGER

The trigger is factory set for safe usage, however, the mechanism is adjustable should you wish to alter the factory setting.

To adjust the trigger, firstly remove the action from the stock.

To adjust the first trigger stage, adjust screw (7).

To adjust the second trigger stage, the safety must be OFF and the rifle un-cocked - then adjust screw (13).

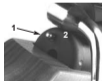
NOTE: When you have altered the position of the trigger block, adjust the screw (3) for the safety function. To do this, release nut (4) and adjust screw (3) until it gets as close to the trigger block as possible without touching it. Lock the screw and nut after adjustment.

NOTE: Always ensure the rifle is not loaded before proceeding with any alterations to the trigger. If the position of the trigger block (9) is changed with screw (13), ensure a sufficient amount of sear engagement with the hammer is maintained. After adjustments have been made, please ensure that the safety mechanism functions normally.

NEVER attempt to remove the trigger mechanism from the rifle!

SAFETY

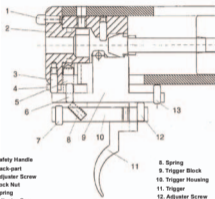
To activate safety, rotate back-part (2) to the right (clockwise) with safety handle (1). When safety is on, the trigger block is locked by the back-part and the trigger housing (10) is locked by screw (3). This ensures that the rifle doesn't fire. To release the safety, rotate the back part to the left (anti-clockwise).



LOGUN

LOGUN

Adjusting the Trigger



- 1. Safety Handle
- 2. Back-part
- 3. Adjuster Screw
- 4. Lock Nut
- 5. Spring
- 6. Adjuster Screw
- 7. Adjuster Screw

- 8. Spring
- 9. Trigger Block
- 10. Trigger Housing
- 11. Trigger
- 12. Adjuster Screw
- 13. Adjuster Screw

FUNCTION

Push the trigger (11) backwards.

When screw (7) meets the surface (stage 1) on the trigger block (9), the block rotates until the hammer is released (stage 2) and the rifle is fired. When you release the trigger, springs (5) & (7) ensure that the trigger returns to its normal position.



3) Ensure both the filler hole and the probe are free from dirt before pushing the probe into the filler hole. Push the probe up to the shoulder to ensure correct filling.

4) With the probe securely fitted, fully charge the rifle to the recommended cylinder pressure for your rifle's calibre - (see page 1). Overcharging will result in a loss of power and could damage the internal seals.

5) When charging is complete, 'bleed' the excess air from the hose using the hose's drain screw and pull the probe out of the rifle.

6) Immediately replace the dust plug. Never use or store your rifle without the dust plug in place.

LOGUN

Loading The Logun Axsor

The magazine rotates clockwise when viewed from the rear of the rifle. To check if the next magazine chamber to come into alignment with the barrel is loaded, look along the groove on the right hand side of the barrel housing.

To remove the magazine, pull back the stainless steel bolt (B). Slide the magazine axis pin (C) forward - the magazine can now be removed. If the bolt will not retract, check that the safety catch (A) is in the anti-clockwise 'off' position.

Note: the magazine can spring out once the magazine axis pin is disengaged therefore, it is recommended that the magazine is held during the process.

Load pellets nose first into the recessed side of the magazine -(the non-flat side). Push the pellet noses through the retaining rubber O-ring until their skirts lie flush or below the bottom of the magazines rear face.

Once the magazine has been reloaded, it should be refitted to the rifle with the flat side of the magazine away from the cocking bolt and the axis pin slid back to retain the magazine. If necessary, rotate the magazine counter-clockwise manually until its movement is arrested by the spring stop.



To load a pellet into the rifle, lift the stainless steel cocking bolt and pull it fully rearwards until you hear a click, then push it fully forward and then down. This ensures that the sear engages with the hammer assembly and the magazine indexes round. Once the bolt is engaged, the rifle is ready to fire. To fire, disengage the safety catch by rotating it counter-clockwise and if safe to do so, take careful aim and squeeze the trigger.

To load the next pellet, lift the cocking bolt, pull it fully backwards and then push it forwards and down. This indexes the next pellet in the magazine and the sear re-engages with the hammer assembly. The magazine contains up to eight pellets.

As the pellets are used and the magazine rotates, its empty chambers are revealed above the barrel housing. If desired, these chambers can be refilled as they are revealed without the need to remove the magazine.

NOTE: IF THE 'O' RING ON THE MAGAZINE BECOMES DRY, LOADING OF PELLETS INTO THE RIFLE CAN BECOME TIGHT RESULTING IN POOR LOADING. LUBRICATION (SILICON SPRAY) IS RECOMMENDED ON THE 'O' RING.

DO NOT PUSH THE COCKING BOLT FORWARD UNTIL YOU ARE READY TO USE THE RIFLE. A SAFETY CATCH IS AN ADDITIONAL SAFETY DEVICE BUT SHOULD NEVER BE RELIED UPON TO PROVIDE AN ABSOLUTE GUARANTEE AGAINST THE RIFLE FIRING.

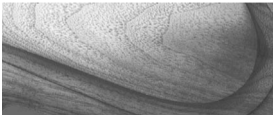
LOGUN

Stock Maintenance

Simply rub a few drops of walnut oil, or similar product into the stock once a month, avoiding over-use of any treatment to prevent build-up.

Do not store your rifle near any heat source such as a radiator, which could cause the wood to dry out and crack.

Should your Logun Axsor/Gemini become wet, do not attempt to dry it rapidly. Remove the stock from the action by unscrewing the single fixing bolt located on the underside of the rifle's fore-end in front of the trigger guard. Mop up any excess moisture, wipe the stock as dry as possible and then allow it to dry completely at room temperature.



LOGUN**LOGUN**

Loading The Logun Gemini

LUBRICATION

The Logun Axsor/Gemini is designed to run maintenance free between annual factory services, at which all necessary lubrication will be carried out. If the cocking bolt requires lubrication, use a very light smear of thin grease on the rear section of the bolt shaft. The appropriate grease can be obtained from your Logun stockist.

It is recommended that the trigger mechanism of your rifle remains as-lubricated by the Logun factory technicians.

Note:

Over-lubrication of your Logun Axsor/Gemini can result in the attraction and accumulation of dust and grit which can affect the performance of the rifle.

SINGLE SHOT

With the safety catch disengaged, lift the stainless steel bolt (B) and pull back until you hear a click. Press the brass magazine (A) with your left hand exposing the pellet tube on the right hand side of the breech (C). Whilst holding the brass magazine open with your left hand, load a pellet into the pellet tube (D). Release the magazine and let it return to its 'closed' position. **DO NOT PUSH THE COCKING BOLT FORWARD UNTIL YOU ARE READY TO FIRE OR WISH TO LOAD A SECOND PELLET.** If you are using single shot mode, push the bolt forward and down (E). Once the bolt is engaged, the rifle is ready to fire. PLEASE NOTE: The safety catch only operates when the rifle is in the fire position and is manually set.



TWO SHOT

After completing the loading cycle above and for a second shot to be loaded and ready, lift the cocking bolt and pull back, press the brass magazine with the left hand to expose the loading chamber on the righthand side of the rifle. Push the cocking bolt forward and down, load the second pellet into the chamber and release, the brass magazine will retract approximately halfway. Fire the first shot, then lift the cocking bolt and pull backwards. The magazine will then index across. Push the cocking bolt forward and down. The second shot is now ready to fire.



DO NOT PUSH THE COCKING BOLT FORWARD UNTIL YOU ARE READY TO USE THE RIFLE. A SAFETY CATCH IS AN ADDITIONAL SAFETY DEVICE BUT SHOULD NEVER BE RELIED UPON TO PROVIDE AN ABSOLUTE GUARANTEE AGAINST THE RIFLE FIRING.

LOGUN

Safety - The Logun Axsor

In addition to utilising the safety catch, a loaded and cocked rifle can be made safe by opening the cocking bolt, pulling it back, and removing the magazine. Then, by pulling the trigger and pushing the bolt forward, the rifle will de-cock.

CAUTION! When de-cocking the rifle, be aware that a pellet may still be loaded in the breech.

If the magazine is unintentionally indexed, follow either of the following procedures:

- a: With the cocking bolt fully open, manually rotate the magazine clockwise until the empty chamber is back in line with the barrel, then push the bolt forward and down.
- b: Remove the magazine from the rifle, close the bolt, point the rifle at a target and when safe to do so, fire the rifle. Refill the magazine and re-fit to the rifle.

When the rifle is not in use, ensure that a pellet has not been loaded into the barrel, remove the magazine and leave the bolt closed and un-cocked.

It is recommended that the magazine is stored separately from the rifle to prevent unauthorised use.

Safety - The Logun Gemini

In addition to utilising the safety catch, a loaded and cocked rifle can be made safe by opening the cocking bolt and pulling it back. Push the magazine across and if applicable, remove the pellet from the pellet tube and then allow the magazine to close.

CAUTION! When de-cocking the rifle, be aware that a pellet may still be loaded in the breech. This pellet cannot be removed except by firing. When safe to do so, aim carefully and fire the rifle.

When the rifle is not in use, ensure that a pellet has not been loaded into the breech and leave the bolt closed and un-cocked.

LOGUN

Looking After Your Logun Axsor / Gemini

Each Logun Axsor/Gemini is built to provide a lifetime of high performance service and requires very little in the way of user maintenance beyond a wipe over with an oil impregnated cloth after every use.

In fact, the best way to keep your Logun operating perfectly is to do nothing at all except send it back to Logun once a year for a full service by our trained technicians. The carrying out of this service is a condition of the Logun Axsor/Gemini's Lifetime Warranty.

Your Logun Axsor/Gemini is built almost exclusively from aircraft grade aluminium and stainless steel which all but eliminates the problem of rust suffered by many other airguns. However, a quick wipe over all metal surfaces with a lightly oiled rag will maintain a pristine appearance.

Apart from the occasional removal of the stock, it is vital that the rifle is never dismantled or modifications made other than by trained Logun technicians. Such actions will be highlighted to our technicians through the examination of several anti-tampering devices built into the rifle. If any such evidence manifests itself, the rifle's lifetime warranty is immediately invalidated. The Logun Axsor/Gemini is a precision instrument that should not be interfered with by untrained personnel.